

Intech[®]

Intech
Instruments

Instrumentation * Monitoring* Control

Intech specialises in providing
Quality Industrial Instruments,
Manufactured locally.

Intech has two offices:
Export office located in Christchurch.
Other office located in Auckland



Intech has distributors located in Australia, Europe, Colombia and the East coast of the United States.

Support companies are located in Korea, Malaysia, Singapore, Chile and Argentina.

Our products are used all over the world in a variety of industries.



Manufacturing Process



Some Industries that use Intech's products...



Blood Bank



Some of our Products:



XU Universal Input Transmitters

- **XU2:** 2 Wire, Single Universal Input, Zero adjust pot.
- **XU2HI:** Isolating, programmable temperature Input Transmitter, for In-Head, 2 wire.
- **XU2HN:** Non-Isolating, RTD programmable, for In-Head, 2 wire.
- **XU4:** 4 wire, programmable single universal Input transmitter, Zero adjust pot.
- **XU-USB:** USB programming Key.



XI 4~20mA Isolator Series

- **XID-L, XI-L, XI-P and XID-P1 Isolators**

- * Isolating 4~20mA input to 4~20mA output.
- * Loop powered isolator.
- * High accuracy.
- * DIN rail mount.
- * Reverse polarity protected.
- * 1 to 4 transmitters per enclosure.



- **XI-P** is also good for line filtering at the receiving end of the line.

No power supply needed on the XI-P, Input powers Output.

Loop Powered Transmitters

- **Options:** LPI Series = isolating
LPN Series = non isolating
- Output, 4~20mA Loop Powered.
- 2 wire transmitters.
- 2kV isolation for LPI series.
- 0.1% accuracy.
- 40~200mV output test signal.
- Reverse Polarity Protection.



Plug-in Transmitters – PI Series

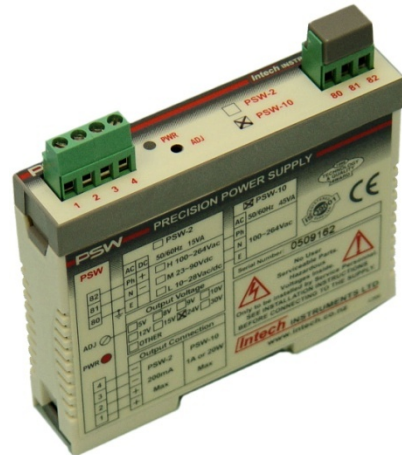
- **8 Options available**
- Input & Output ranges are field programmable.
- 4 wire transmitters.
- Bi-polar – Input & Output signals.
- 1.6kV isolation.
- 0.1% accuracy.
- Plug-in – DIN rail mount base.
- Special Calibration available.
- L.V available for some models.



Instrument Power Supplies

PSW-10-F, PSW-2, PSW-2-L and PSW-10 options available.

The PSW-2 and PSW-10 have Output adjustable Voltages



Humidity and Temperature

- **IN-HWD:** Indicator/Transmitter of Humidity and Temperature
- **WDT-DW:** Wet and dry bulb tank
- **LPN-H:** Wall and Duct mount Humidity and Temperature transmitters.



Process Indicators

- **IN-uP4:** Universal Input Indicator, Panel Mount
Requires XU-USB Programming Key.



- **uP4-DIN:** Universal Input Indicator, DIN Rail Mount.



- **LPI-LCD-6:** 4~20mA panel display – calibrator is NOT required.



- **LPI-LCD-5:** 4~20mA Loop powered indicator – requires 4~20mA calibrator.



Indicators for special Applications

— on request

- **IN-P:** Multifunction Process Indicator

Options of:

- * 1 or 4 of either 4~20mA, thermocouple or RTD Pt100 inputs
- * 2, 4 or 6 5A relay Outputs
- * Ethernet or Isolated Serial Port

Other Functions available.



Also available: **IN-R, IN-RT & IN-RTB** Indicators



PLC Multiplexers/Remote Stations

- **2100-A16**: Analogue Input Station.
- **NET** option available
- *16 Analogue differential inputs
- *4 Digital Inputs
- *2 Relay Outputs
- *2 Analogue Outputs



- **2100-M**: Analogue Input Multiplexer with 16 Analogue inputs.
- RTD Pt100 or mA Inputs available.

2400 Series Remote Stations

- **2400-A16-NET** – Port 1 Fitted with Ethernet TCP/IP Comms.

- *Up to 16 Isolated Analogue Inputs, Intelligent Multiplexer / E & S

- *Thermocouple, RTD, mA, mV, V, Pulse/Digital.

- *Modbus

- *Easy to install and program



- **2400-A16-SD-NET** –

- *Analogue Inputs 1~16

- *Digital Inputs 1~4

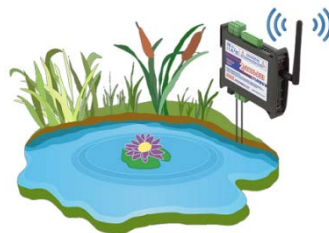
- *Ambient Sensor onto an SD Card. Read SD Memory Card by removing SD Card and Reading from a Computer SD Port, or using Comms.

- *Ethernet TCP/IP Adapter



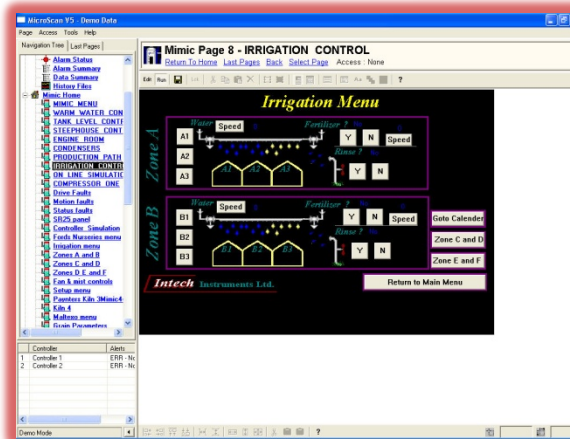
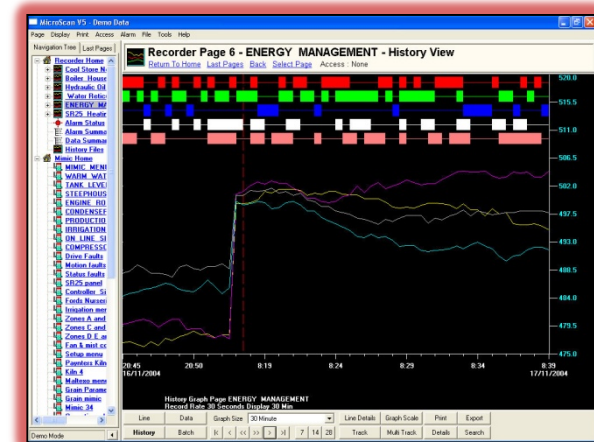
ZigBee® Wireless Monitoring

- Real-time Wireless Monitoring
- Unique Mesh ID to pair nodes
- Individually programmable Inputs
- Analogue 4~20mA Outputs



MicroScan SCADA Software

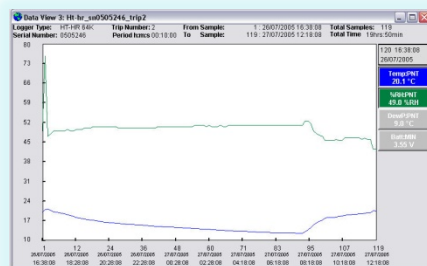
- Real-time Monitoring
- Complete Supervision, Control and Data Acquisition software, based on Windows.



Data Loggers



- HR Series
- LCD Series
- GP-MC
- Software OmniLog



- Download options via USB or RS232



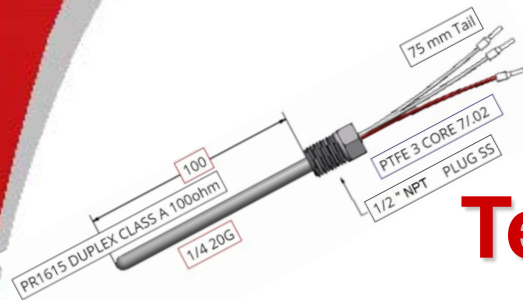
Weather Sensors (Output 4~20mA)



Weather Sensors for measuring:

- *Air temperature
- *Humidity
- *Barometric pressure
- *Light energy
- *Wind speed and direction.





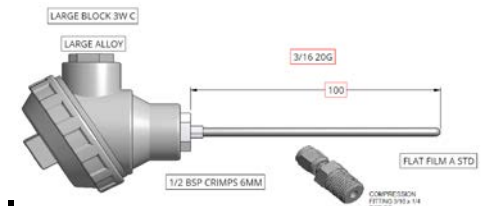
Temperature Sensors

Purpose Built, Bespoke, Temperature Sensors:

- RTD – Resistance Temperature Detectors:

Some Options:

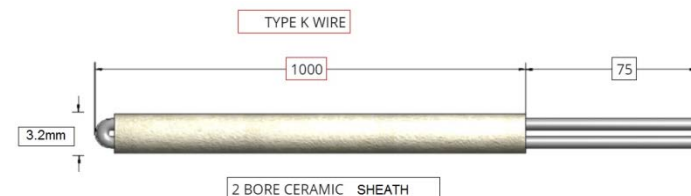
- * RL – with Leads
- * RH – With Protection Head
- * WMR – Wall mount Assembly
- * MRL – Mineral Insulated RTD with Leads



- Thermocouples

Mineral Insulated Thermocouple with:

- * Leads
- * Connectors
- * Protection Head



Visit our Website:

www.Intech.co.nz

Contact:

Intech Instruments Ltd.

59 Mandeville Street

Christchurch, New Zealand 8011

Tel: +64 03 343 0646

Fax: +64 3 343 0649

E-mail: export@intech.co.nz

Intech[®]
Instruments