

IOTudio - 2300 series MODBUS configuration software

Software Installation:

1. Download the [IOStudio.zip](#) file, and extract the IOStudio2.8 folder containing all the files to a temporary location like your desktop.

2. Run the setup.exe file from inside the extracted IOStudio2.8 folder.

If not already installed, you will be prompted to install [Microsoft .NET 3.5](#) on the computer. Then start setup.exe again.

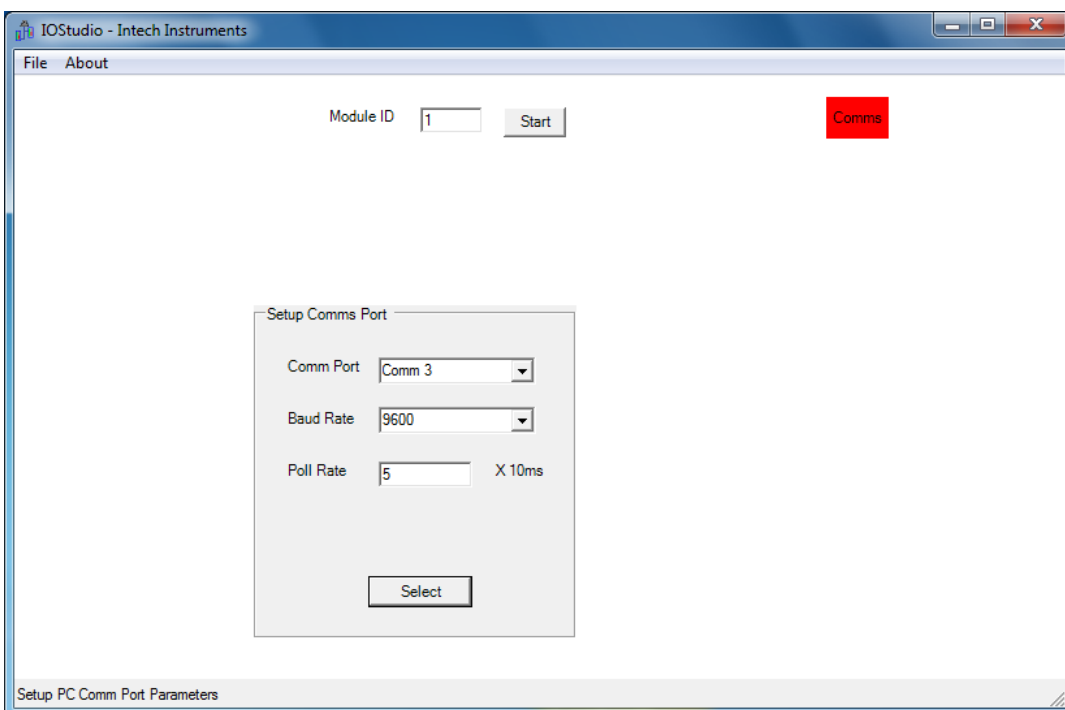
Note: [Windows 10/8.1/8 require Internet access to install .NET Framework 3.5](#)

3. Run the software by double clicking on the IOStudio shortcut link on the desktop.



Software Operation:

1. Click on the File menu > Setup Comms to select the Comm Port the 2300 station is connected to. Note: This step is required each time the software is used.



Important:

IOStudio can only be set to Comm 1~6.

You may need to alter the Comm Port number in Device Manager to achieve this.

2. Enter a node number in the Module ID box and click Start and Stop to start and stop comms to the station. The Module ID is the Station ID number as set on the dip switches on the front of the unit.

Station Names

The IOStudio identifies 2300-XX station names according to the following table:

2300-D16	IO16DI
2300-RO4	IO4RO
2300-A8VI	IO8AVIISO
2300-A8I	IO8AI
2300-A8II	IO8AIIISO
2300-AO8I	IO8AO
2300-Tc8	IO8TCISO
2300-RTD6	IO6RTD
2300-MULTI	IODAIO

Refer to the 2300 station's Installation Guide and MODBUS Supplementary manual for more info:

www.intech.co.nz/2300

Example Screens

2300-Tc8

IOStudio - Intech Instruments

File About

Module ID

IO8TCISO

Module Type: 106
Software Version: 7

Modbus Address	Value	Label
30001	1898	Type/SW Version
30002	32767	Thermocouple Input 1
30003	32767	Thermocouple Input 2
30004	32767	Thermocouple Input 3
30005	32767	Thermocouple Input 4
30006	32767	Thermocouple Input 5
30007	32767	Thermocouple Input 6
30008	32767	Thermocouple Input 7
30009	32767	Thermocouple Input 8
30010	234	CJC Temperature
30011	21845	Input Status
30016	30741	Calibrate Raw Data
40017	0	Calibrate Control
30100	769	DIP Switch
40101	1	Thermocouple Type
40102	50	Line Frequency
40103	100	CJC Offset
40104	1	Display Units °C/°F
40121	9600	Baud Rate
40122	0	Parity

Description of Modbus Register

Move Mouse pointer over Value for Description

IOStudio - Intech Instruments

2300-RO4

IOStudio - Intech Instruments

File About

Module ID

IO4RO

Module Type: 113
Software Version: 8

Modbus Address	Value	Label
1	0	Relay Output 1
2	0	Relay Output 2
3	0	Relay Output 3
4	0	Relay Output 4
30001	2161	Type/SW Version
40002	0	Output Status
30100	513	DIP Switch
40101	0	Output Watchdog Timer
40102	10	Modbus Master Timeout
40103	8	Modbus Master Rate
40104	0	Output Mode
40121	9600	Baud Rate
40122	0	Parity
40123	1	Stop Bit
40124	2	Reply Delay

Description of Modbus Register

Move Mouse pointer over Value for Description

IOStudio - Intech Instruments

www.intech.co.nz

Intech INSTRUMENTS LTD
Instrumentation • Monitoring • Control