

Mini Packs

Chart Recorder replacement packages

Feature Packed

Easy to Use

Cost Effective



Recorder Features:

- Real-time line graphs and data screens
- Batch & continuous recording
- Mathematical blocks
- Totalising in engineering units
- Total hours run facility
- Data logs to printer
- ISO 9001 support
- Data storage to disk
- Help screens
- Historical search & retrieval
- Toolbar support
- History replay
- Function key support
- Alarm & event, handling

Mini Packs 8, 16 or 32.

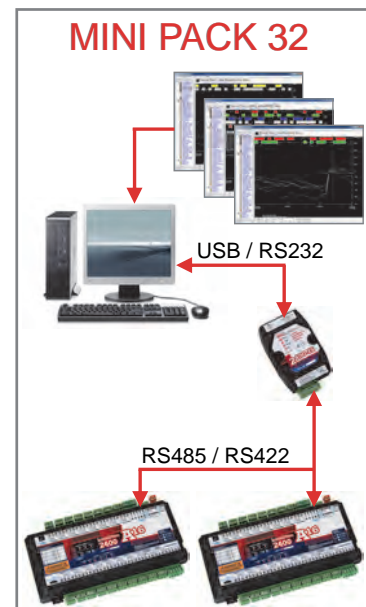
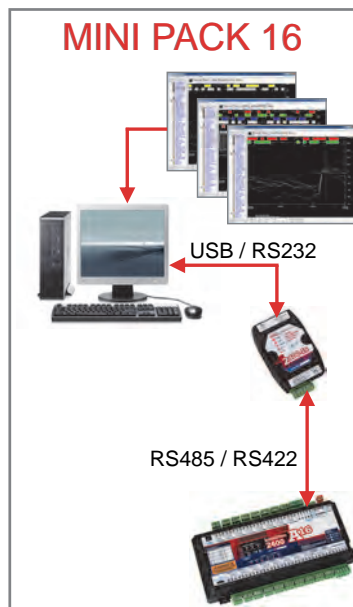
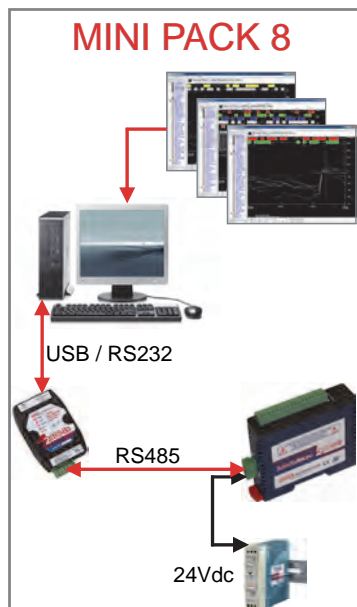
Together the Intech Micro I/O Remote Station(s) (**2300 Series** or **2400-A16-I16**) with the **MicroScan Recorder SCADA software** have the price advantage and technology edge. Mini Packs are more competitive and maintenance costs much lower.

The **MicroScan Recorder SCADA software** includes features beyond the scope of chart recorders, including trends, realtime data, alarms and historical storage.

The Intech Micro **2300 Series** I/O Remote Stations are available for one of the following input types: mA, mV, Voltage, Thermocouple, RTD, Combination.

The Intech Micro **2400-A16-I16** Remote Station includes 16 individually configurable input channels for Thermocouple, Pt100, Pt1000, mA, mV and V, plus 4 digital inputs, 2 alarm relay outputs and 2 analogue outputs.

www.intech.co.nz/minipack



MicroScan Recorder Software

The recorder module is a vital component to any monitoring system as it represents the data acquisition component. The visual displays can switch between the data (spreadsheet) format and the line (trend graph) format to group and display information instantaneously and historically with on screen viewing as far back as you want to go. The Recorder is ahead of its time and liked by all who use it.

- Real-time line graphs
- Data analysis
- Continuous Recording
- Batch recording
- Mathematical
 - subtraction -addition
 - Multiply -divide
 - Sq root -average
 - min/max -nat. log
- Historical retrieval
- Historical search
- History replay
- Function Key Support
- Excel Support
- ISO 9001 support
- Data logs to printer
- Report generator
- User log-on and audit
- Real-time data screens
- Alarm handling and printing
- Event handling and printing
- Comment entry by operators
- Multi-level passwords
- Data storage to disk
- Total hours run facility
- DDE support
- Help screens

A brief on some of the easy to use features:

Trend Screen

Multicoloured display for analogue and digital.
Track display gives pointed values.
Adjustable graph scale and time base.
Zoom support.
High speed logging.
Automatic logs and graphs.

History Screen

Searching for historical data made easy.
Export to word processor or spreadsheet.
Easy slow playback.

Data Screen

Data screen configurable fonts.
Easy to read real time data.
Colour highlighting of alarms.
Historical replay support.

Data Screen Calibration

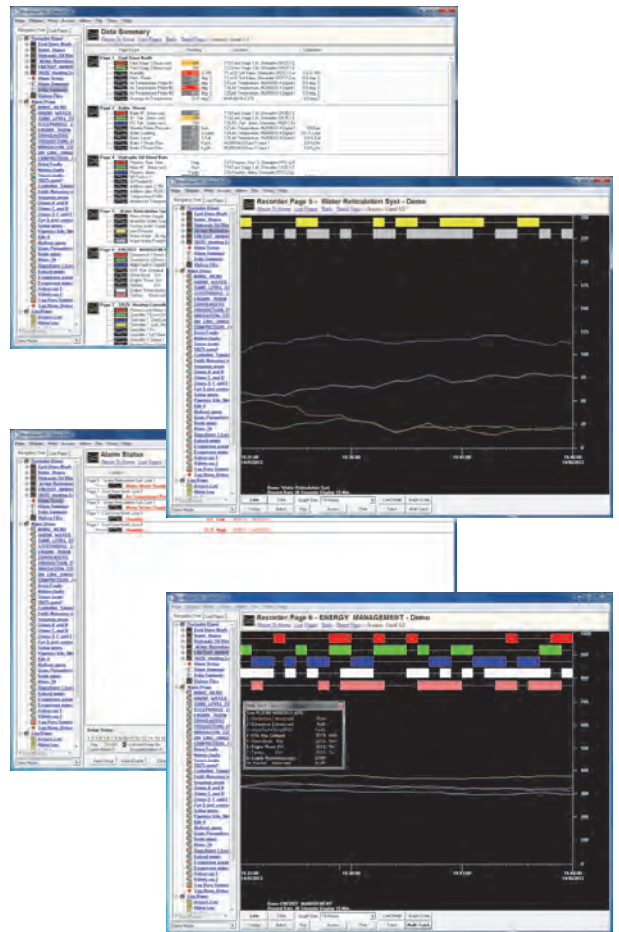
On-line calibration and ISO tracking support.
Configurable screen area for daily and grand totalisers.
Daily and grand minimum and maximum values.
24 hour average.
Alarms count and duration times.

Function Keys

Configurable screen formats.
Toolbar support.
Multilevel access.
Help screens and function key support.

Alarm Screen

Alarm status window.
Configurable to automatically appear on alarm.
Alarms filed to disk or event log.
Full annunciation support.
Configurable automatic alarm printing.
Easy access to alarm set points after access obtained.



Printing Features

Automatic and manual log and graph printouts.
Automatic alarm logs of batch printing.
Comment printing and setup printout.

Excel Support

Easy export of data into Microsoft Excel. Up to 25 data areas are available for each channel including: Input data, alarm setpoints, totalisers and so on.

Connects to the MicroScan SCADA & PLC at the same time.

