



Intech INSTRUMENTS LTD

COST SAVING TOOLS

FOR PLC INTEGRATORS

16 channel Input Analogue Multiplexers
 MicroScan Real Time Monitoring
 Stand-alone Analogue and Digital
 Input/Output stations & PLC Accessories

www.intech.co.nz

2100 Series Multiplexers

PLC analogue input expansion Two 16 channel input Multiplexers to choose from:

1. 2100-A16 intelligent multiplexer

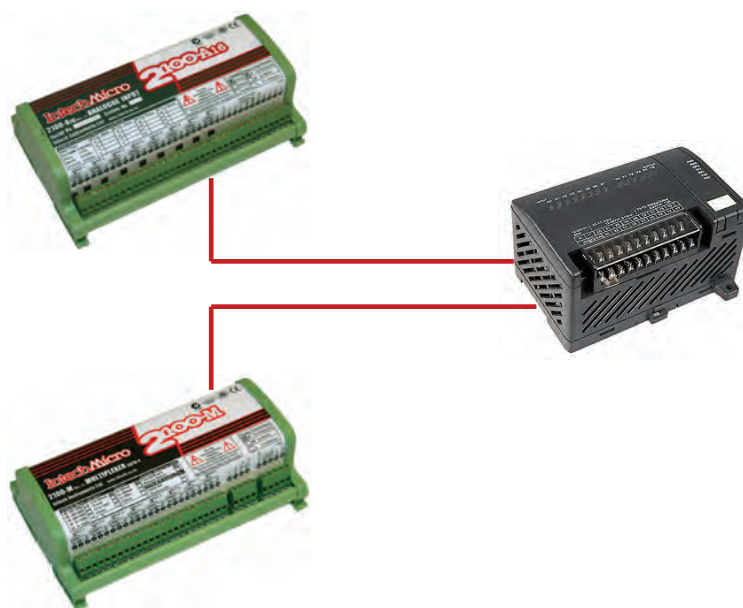
16 individually configurable inputs.
Thermocouple most types/most spans
RTD Pt100 / Pt1000*
mV V
mA all ranges
Modbus RTU Modbus TCP

www.intech.co.nz/2100-a16

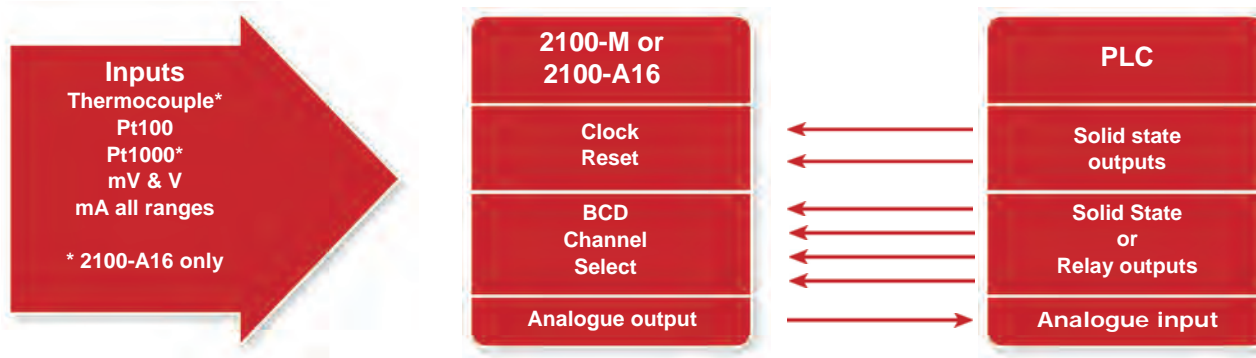
2. 2100-M analogue input multiplexer

16 analogue inputs
High accuracy 0.1%
Field programmable ranges within each model
2100-M-R = RTD Pt100 any span
2100-M-I = mA any span

www.intech.co.nz/2100-m



Channel select by PLC is same for both multiplexers:



MODEL	PLC CHANNEL SELECT		COMMUNICATIONS			PROGRAMMABLE INPUTS		POWER SUPPLY	
	CLOCK-RESET	BCD	MICROSCAN RS485 RS422	MODBUS RTU (RS485)	MODBUS TCP (Ethernet Option)	UNIVERSAL INPUTS	FIXED INPUT TYPE PROGRAMMABLE RANGE	12/24V AC/DC	110/240VAC
2100-A16	✓	✓	✓	✓	✓	✓		✓	✓
2100-M	✓	✓					✓	✓	✓
2300 SERIES			✓	✓	✓		✓	✓	

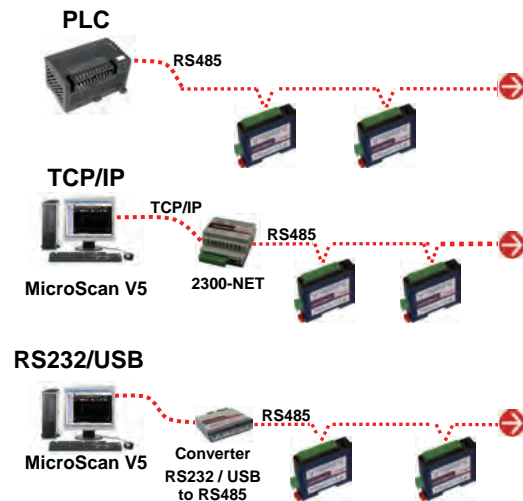
Stand-alone Analogue & Digital Input/Output stations - 2300 Series

Low cost MODBUS RTU with MODBUS TCP option

- Low Cost I/O Remote Stations
- MicroScan V5 Compatible - Seamless Integration
- Plug-in connectors makes replacement easy
- Programmable Ranges within input type
- 1.0 kV or greater Isolation.
- 0.2% accuracy (12 Bit).
- Compact DIN rail mount enclosure
- LEDs indicate I/O status plus comms and Power Supply
- Comms Fail Alarm (Optional)

www.intech.co.nz/2300

Examples of connectivity PLC: TCP/IP: RS232/USB:



MODEL	2300-A8I	2300-A8II	2300-A8VI	2300-Tc8	2300-RTD6	2300-MULTI	2300-D16
	8 x 4~20mA Inputs Commoned	8 x 4~20mA Inputs Isolated	8 x Volts Inputs Isolated	8 x Thermocouple & mV Isolated	6 x RTD Inputs	6 x Combination Inputs & Outputs	16 x Digital Inputs

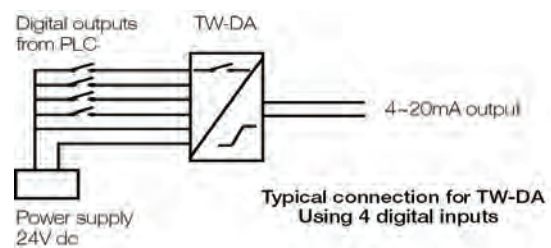
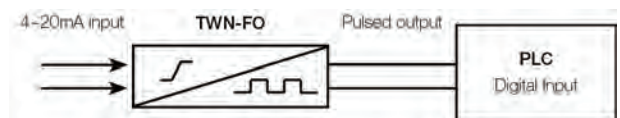
2300-NET	Ethernet TCP/IP to RS485 Converter, Isolating. The 2300-NET converts TCP/IP to RS485 for communication to the 2300 series stations.
-----------------	--

PLC Accessories

TWN-FO DC to Frequency Interface.
Converts a 4~20mA signal to a frequency for direct conversion into a PLC digital input. Standard output = 10~1010 Hz.

TW-DA Digital to analogue converter.
Ideal for a digital PLC that requires a 4~20mA output.
2 digital inputs gives 4 output steps. 33.3% per step.
3 digital inputs gives 8 output steps. 14.3% per step.
4 digital inputs gives 16 output steps. 6.67% per step.
5 digital inputs gives 32 output steps. 3.22% per step.
6 digital inputs gives 64 output steps. 1.59% per step.

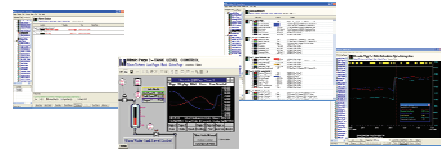
TWN-FF Frequency Prescaler.
Input pulses divided to open collector pulse output interface.
Division factor: 2, 4, 8, 16, 32, 64, 128, 256, 512, 1024, 2028, 4096.



MicroScan Real Time Monitoring

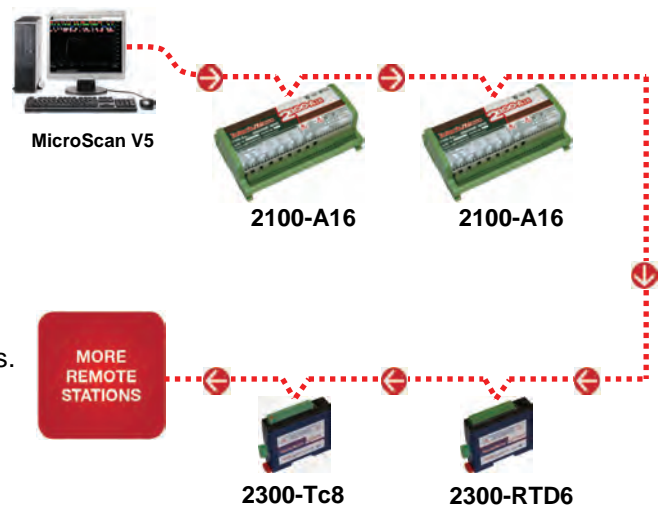
One of the best recording packages on the market

- Connects to the Intech Micro 2100 and 2300 series I/O modules.
- Complete supervisory control and data acquisition system.
- New version 5 even easier to use and implement.
- Flexible user friendly alarm handling across the Ethernet.
- Audit tracking of all users.
- Ethernet many user capability.



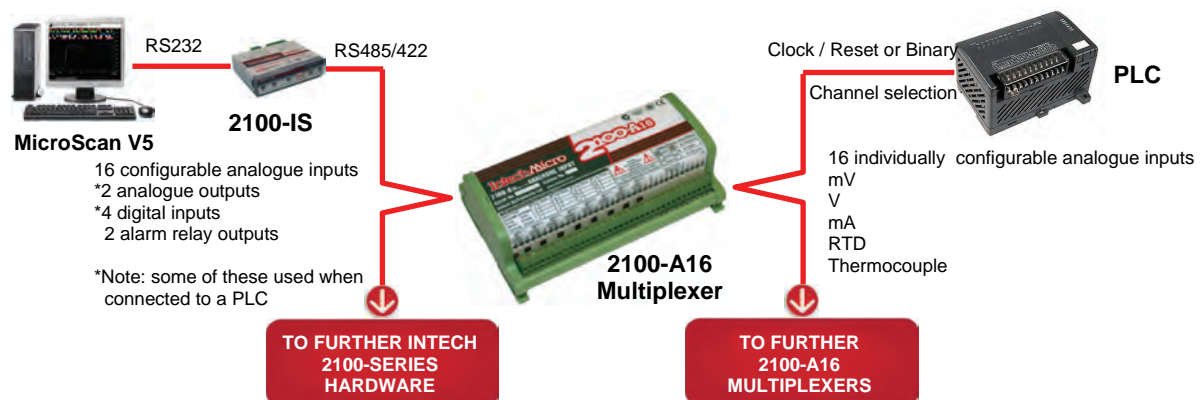
- Recorder capacity increased to 1000 channels.
- Audit tracking of all configuration changes.
- Disk Store rate selectable down to 1 second.
- Batching support.
- Comprehensive backup of data and configuration changes.
- Industry leaders for speed of historical data retrieval.
- Mimic Pages expanded to 100 pages.
- Tag database expanded to 5000 tags.

www.intech.co.nz/microscan



MicroScan integration example

The MicroScan system and the PLC can access the 2100-A16 multiplexer at the same time.



Your Distributor is