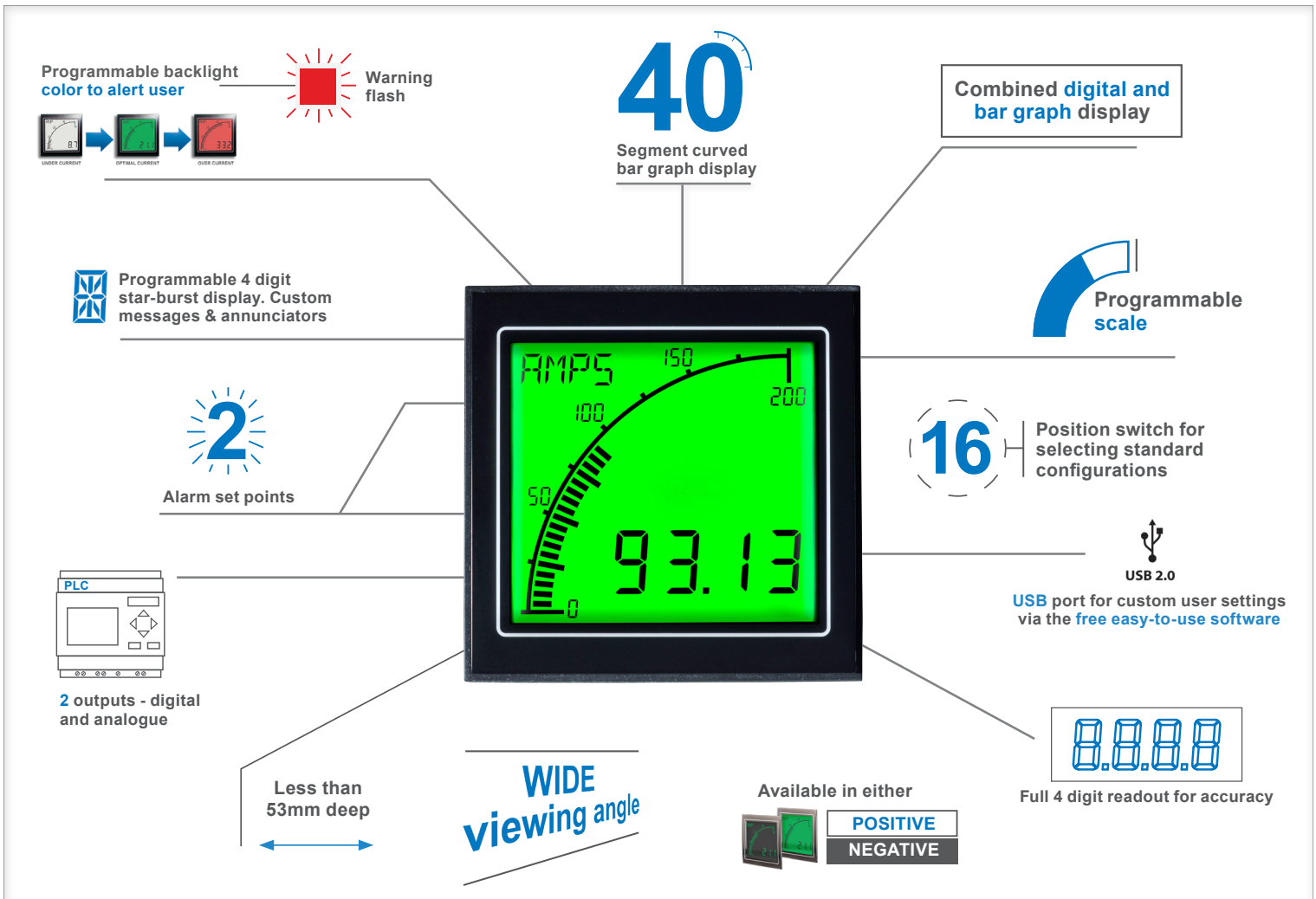




The Advanced Panel Meter

APM Range

MODELS: Volt Meter, Ammeter, Frequency Meter



The most visible, easy to use, programmable panel meter on the market. The APM provides accurate measurement with an immediate visual indication of critical parameters. It has been designed for engineers who require a more effective way of monitoring and displaying data.

The unique display combines traditional moving coil meters with the latest digital panel meters and it features a multitude of options that can be set using the APM software. The backlight can be programmed to change color to alert the operator when the current or voltage supply is too high or too low, reducing the risk of equipment failing and improving efficiency.

Key Features

Large multi-format display that incorporates:

- 40 segment bar graph display
- Large 4 digit display
- Separate Starburst display area for annunciators, custom messages and alarm information
- Dynamic backlight colour

Programmable:

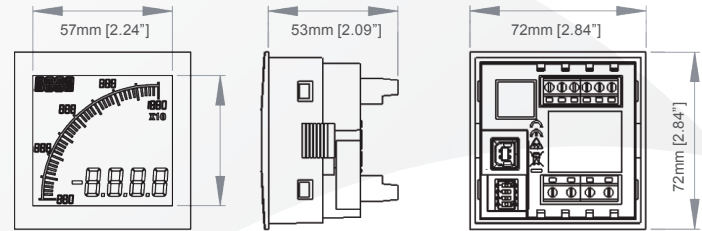
- Scale (offset and gain) and Range (min and max)
- Custom annunciators
- User selectable backlight color and intensity
- Two independent alarm set-points
- Two independent outputs (output models only)
- 4-20mA analogue monitor output (output models only)

| MEASUREMENT | VOLT | AMP | FREQUENCY |
|------------------------------|----------|------------------------|-----------|
| Input range (DC) | 0 - 600V | 0 - 5A | - |
| Max Using Shunt | | 1,000A | |
| Input range (AC) | 0 - 600V | 0 - 5A | 2 - 400Hz |
| Max Using CT | | 10,000A | |
| Accuracy | 1% | 1% | 0.5% |
| Display modes | | Peak or RMS | |
| ENVIRONMENTAL | | | |
| Temperature - operating | | -10 to +60°C | |
| Temperature - storage | | -40 to +70°C | |
| IP rating (from the front) | | NEMA 4X & 12 with IP65 | |
| POWER SUPPLY | | | |
| Nominal Input (AC or DC) | | 12-24 VAC/VDC | |
| DISPLAY | | | |
| Number of digits | | 4 | |
| Digit height | | 12mm [0.47"] | |
| Digit height of annunciator | | 6mm [0.23"] | |
| Number of message characters | | 4 | |
| Backlight colours | | Red, Green, White | |
| LCD display | | Positive or Negative | |
| OUTPUT MODELS | | | |
| Max voltage | | 34V | |
| Max current | | 500mA | |
| Analogue output | | 4-20mA | |
| CERTIFICATION | | UL and cUL, CE | |

Visibility:

- User adjustable backlight brightness and colour
- Large display
- Wide viewing angle (both horizontal and vertical)
- Custom annunciators

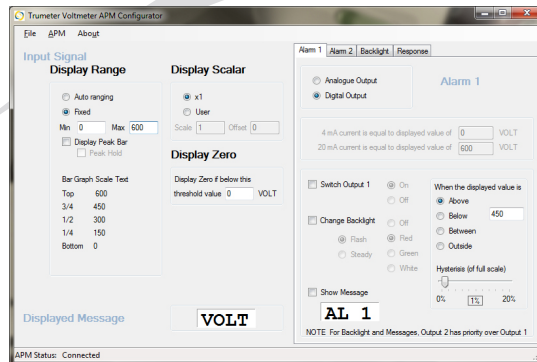
Dimensions:



Panel cutout: 68mm x 68mm [2.68" x 2.68"] as per DIN43700/IEC61554

Easy To Use Software

Just plug into any USB port on your PC, run the freely available APM Configurator application and you're off. No drivers required.



Part Numbers: (POS LCD = Positive LCD; NEG LCD = Negative LCD)

| Volt | Description | Amp | Description | Frequency | Description |
|--|--------------------------------------|-------------|-----------------------------------|--------------|--------------------------------------|
| APM-VOLT-APN | APM VOLT METER, POS LCD | APM-AMP-APN | APM AMMETER, POS LCD | APM-FREQ-APN | APM FREQ METER, POS LCD |
| APM-VOLT-APO | APM VOLT METER, POS LCD WITH OUTPUTS | APM-AMP-APO | APM AMMETER, POS LCD WITH OUTPUTS | APM-FREQ-APO | APM FREQ METER, POS LCD WITH OUTPUTS |
| APM-VOLT-ANN | APM VOLT METER, NEG LCD | APM-AMP-ANN | APM AMMETER, NEG LCD | APM-FREQ-ANN | APM FREQ METER, NEG LCD |
| APM-VOLT-ANO | APM VOLT METER, NEG LCD WITH OUTPUTS | APM-AMP-ANO | APM AMMETER, NEG LCD WITH OUTPUTS | APM-FREQ-ANO | APM FREQ METER, NEG LCD WITH OUTPUTS |
| 022128-01 | USB Cable | | | | |
| By Request: Modbus connectivity | | | | | |
| APM-VOLT-APS | APM VOLT METER, POS LCD WITH MODBUS | APM-AMP-APS | APM AMMETER, POS LCD WITH MODBUS | APM-FREQ-APS | APM FREQ METER, POS LCD WITH MODBUS |
| APM-VOLT-ANS | APM VOLT METER, NEG LCD WITH MODBUS | APM-AMP-ANS | APM AMMETER, NEG LCD WITH MODBUS | APM-FREQ-ANS | APM FREQ METER, NEG LCD WITH MODBUS |

Full specifications available online www.trumeter.com/apm

