

Delivery address: Mackenrodtstraße 14,  
36039 Fulda, Germany  
Postal address: 36035 Fulda, Germany  
Phone: +49 (0) 661 60 03-7 25  
Fax: +49 (0) 661 60 03-6 81  
E-Mail: mail@jumo.net  
Internet: www.jumo.de

JUMO House  
Temple Bank, Riverway  
Harlow, Essex CM20 2TT, UK  
Phone: +44 (0) 12 79 63 55 33  
Fax: +44 (0) 12 79 63 52 62  
E-Mail: info@jumoinstruments.fsnet.co.uk

735 Fox Chase  
Coatesville PA 19320, USA  
Phone: 610-380-8002  
1-800-554-JUMO  
Fax: 610-380-8009  
E-Mail: info@JumoUSA.com  
Internet: www.JumoUSA.com



# Accessories for flush-panel mounting instruments to DIN



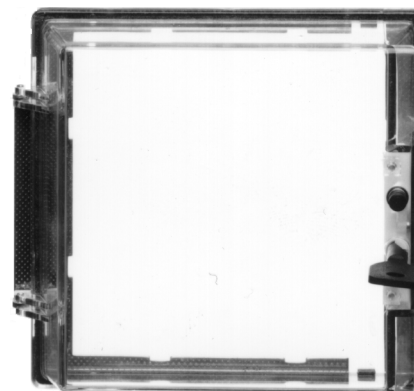
## Protection cover AK-96

Lockable clear protection covers are available for protection against mechanical damage and unintentional or unauthorised manipulation, as well as protecting against dust and splashing water.

The panel mounting instrument is passed through the cover frame and pushed into the panel cut-out, where it is secured from behind.

### Technical data

- lockable (plastic lock)
- high-impact clear plastic (polycarbonate)
- heat-resistant up to 130°C
- suitable for flush-panel mounting instruments with 96mm x 96mm bezel (DIN 43 700)
- Protection IP65



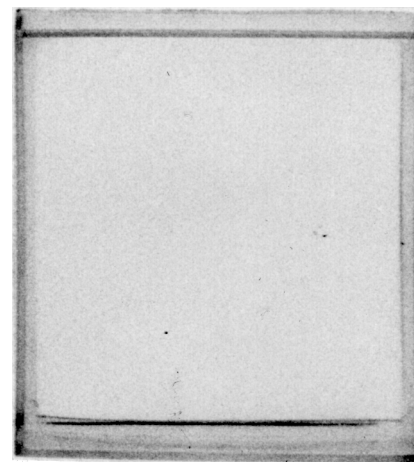
AK-96

## Protection cover AK-48/f

The flexible cover protects against dust and splashing water while still allowing continued operation. The protection cover is slipped over the bezel, the instrument is pushed into the panel cut-out and secured from the back.

### Technical data

- flexible clear plastic (soft PVC)
- size 48mm x 48mm
- Protection IP65



AK-48/f

Type	Controller
AK-48/f	to Data Sheet 70.1030

## Blanking covers for panel cut-out

The blanking covers made of black plastic are secured from the back with plastic clips.

Type	Panel cut-out for flush-panel mounting instruments with bezel (DIN 43 700)
3-445/177	96mm x 96mm
3-445/317	48mm x 96mm



3-445/177

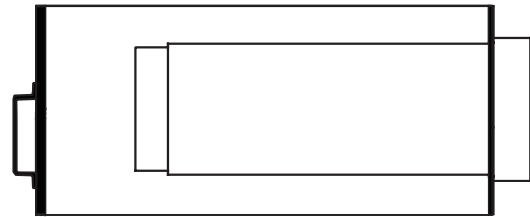
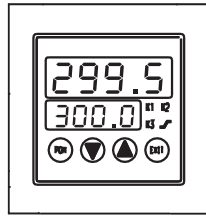


3-445/317

## Mounting brackets for DIN rail

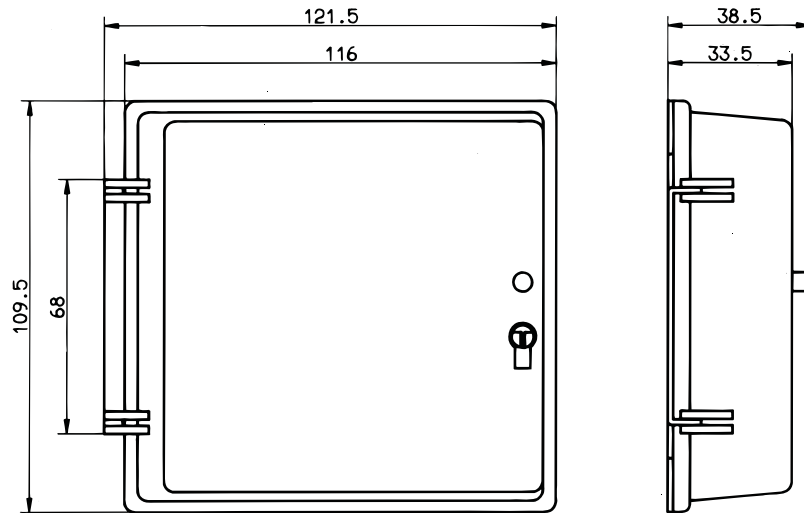
The mounting brackets for DIN rail enable flush-panel mounting units to be mounted according to DIN, also in switchgear cabinets, for example.

Mounting brackets for units with bezel	Dimensions (W x H x D)
48mm x 48mm	68mm x 70mm x 153mm
48mm x 96mm (portrait format)	68mm x 108mm x 153mm
96mm x 48mm (landscape format)	108mm x 70mm x 153mm

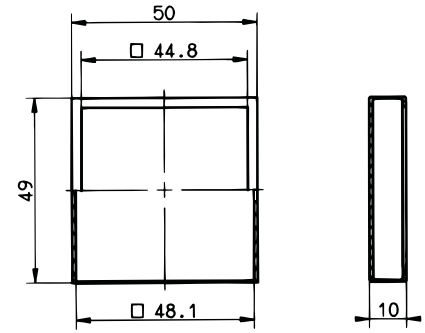


## Dimensions

AK-96



AK-48/f



Distributed in New Zealand by:

**Intech** INSTRUMENTS LTD

Christchurch Auckland [www.intech.co.nz](http://www.intech.co.nz)  
 Ph: +6433430646 098271930  
 Fx: +6433430649 098271931 [sales@intech.co.nz](mailto:sales@intech.co.nz)