

Using USB Download Cables

Follow these instructions when using USB download cables with TruTrack data loggers.

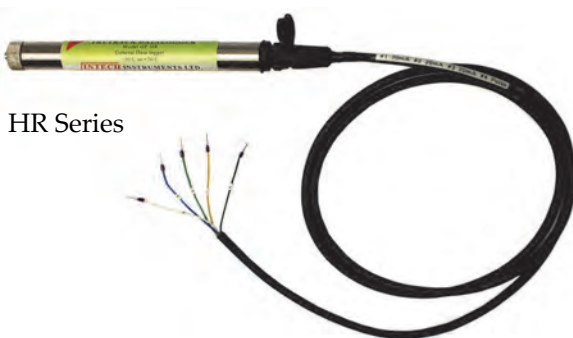
ATTENTION!

Do NOT connect a USB Download cable to the computer before Omni7 and the FTDI USB Drivers are installed!

The **Omni7 Data Management Software** has direct USB support for the HR, LCD and MC series of TruTrack data loggers.

Intech Instruments Ltd has three types of USB Download cable available for use with TruTrack data loggers:

- ⇒ The **DLC3USB** is for the **HR series** of loggers (3 pin communication socket)
- ⇒ The **DLC8USB** is for the **LCD series** of loggers (8 pin mini DIN communication socket)
- ⇒ The **DLC5USB** is for the **GP-MC** logger (9pin D communication socket)



HR Series

LCD Series



- ⇒ An Administrator account or password will be required for installation. Contact your IT support for this if needed.
- ⇒ User Account Control (UAC) *may* need to be disabled for Omni7 to operate correctly.
- ⇒ Omni7 requires manual connection and disconnection to a data logger using the Green 'Connect' and Red 'Disconnect' buttons. It will not connect to a data logger automatically.

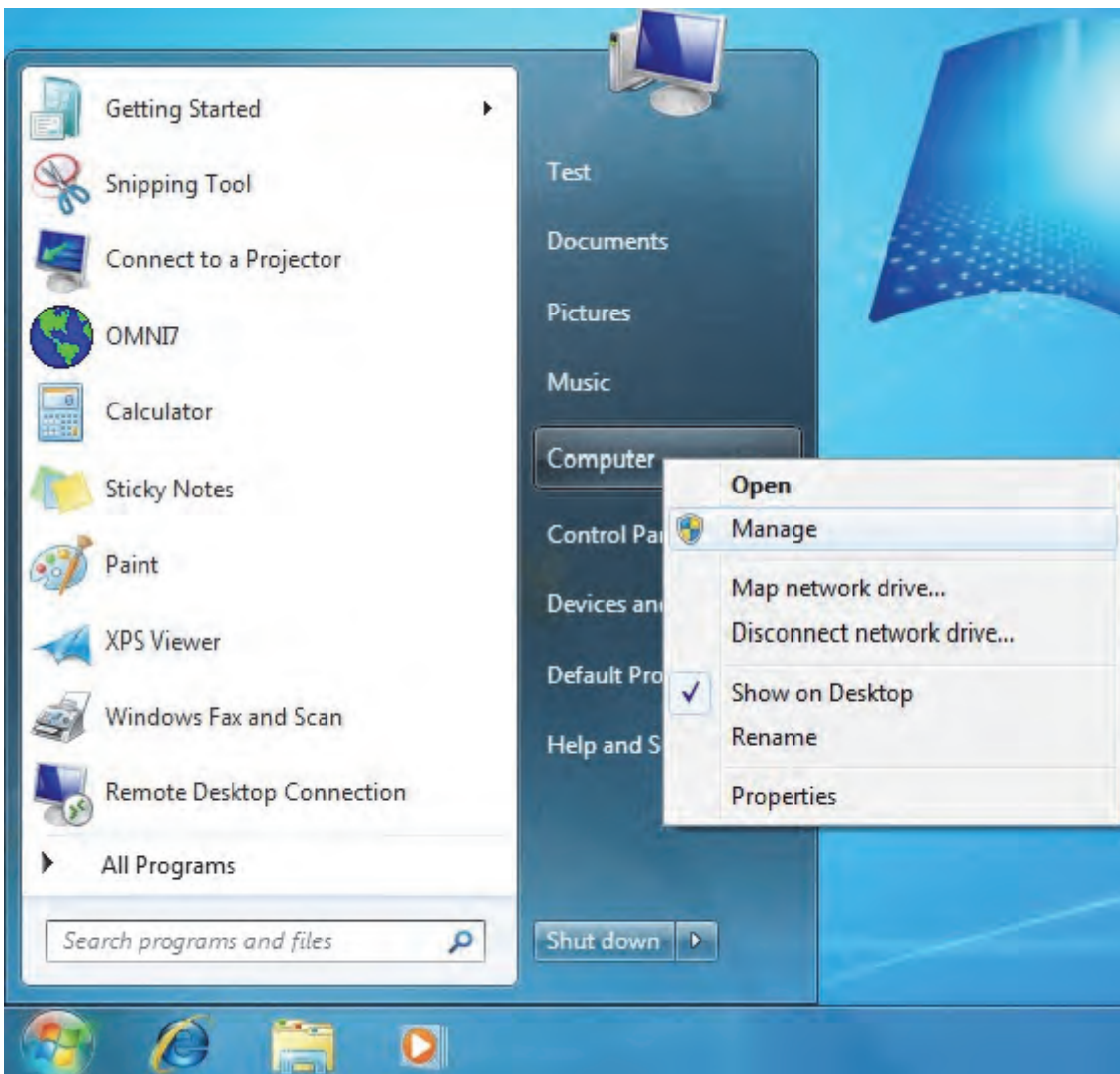
If you are having issues connecting to your data logger, please try these steps:

- ⇒ The logger battery may be flat and require replacement. Typical logger battery life is 1 to 5 years, depending on usage.
- ⇒ Check that the USB download cable is securely attached to both the logger and computer.
- ⇒ Download and install the latest FTDI USB Windows driver: <http://www.ftdichip.com/Drivers/VCP.htm>
Note: **Always restart your computer** after installing new drivers.

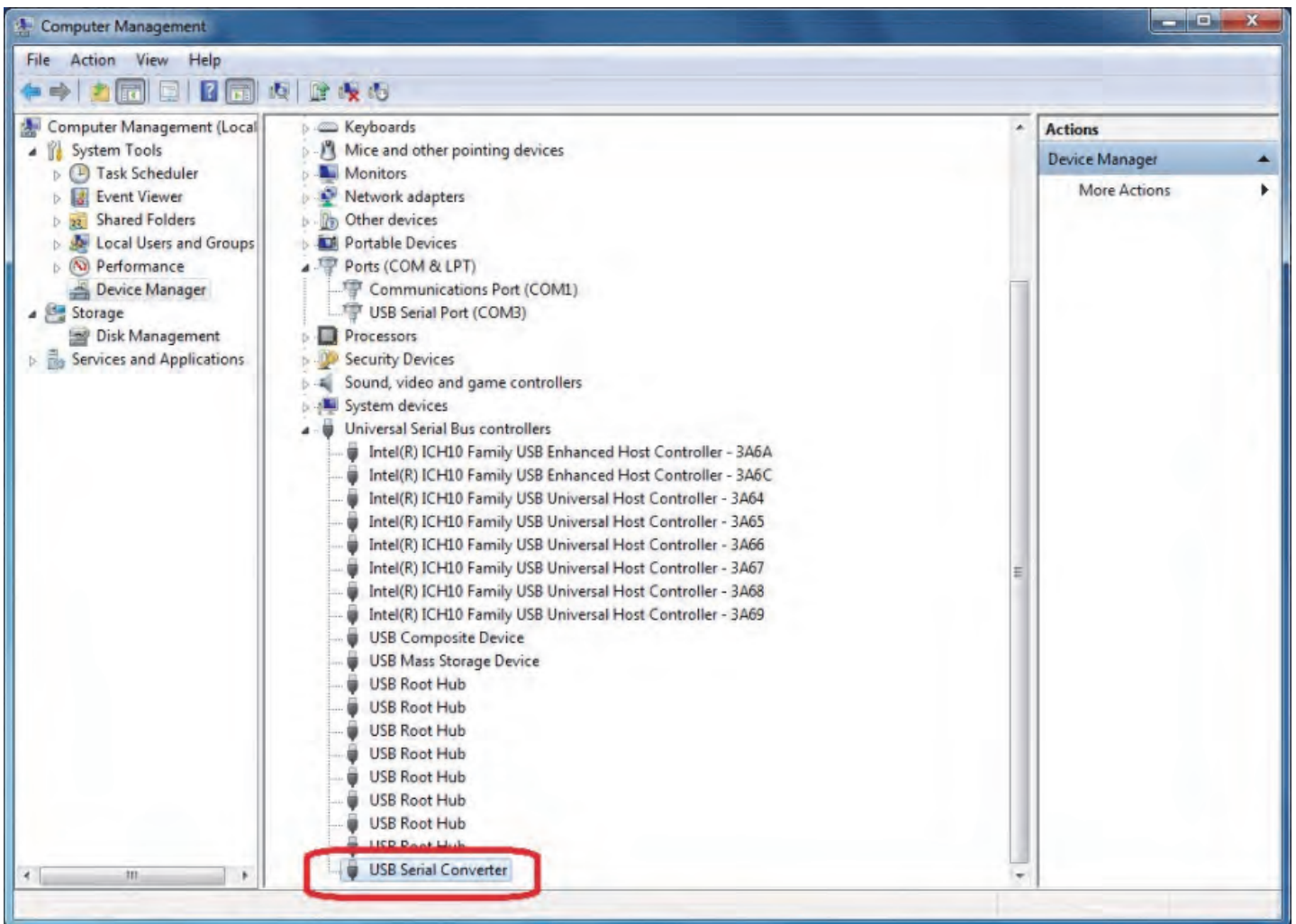
Check if the USB driver is loading the VCP port:

Disabling the VCP port can sometimes help with connecting over USB.

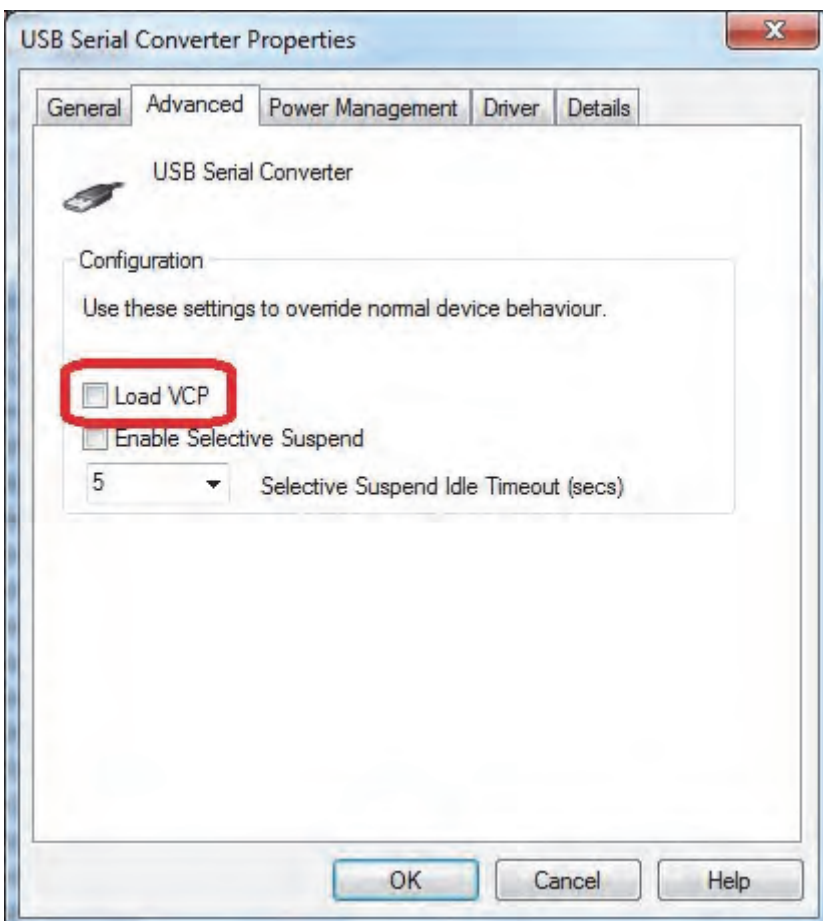
- Open Device Manager (Right click on Computer and click 'Manage', then click on 'Device Manager').



- Locate the USB Serial Converter.



- Right click on 'USB Serial Converter' then click 'Properties'. Click on the 'Advanced' tab.



If the 'Load VCP' is ticked, a Virtual Com Port is being loaded.

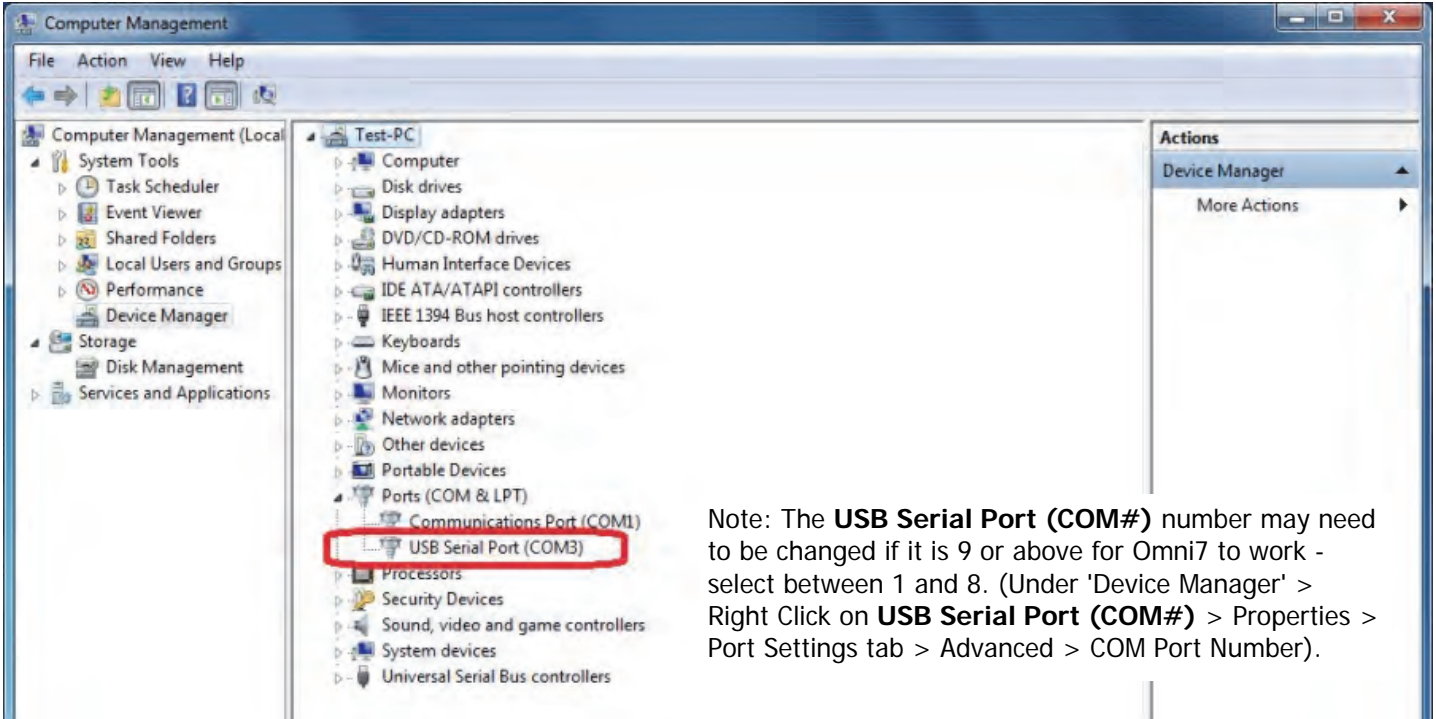
Untick the box, then **restart your computer**.

Open Omni7 and try to connect using the USB connection (a TruTrack Data Logger must be connected via a USB download cable attached to the computer).

Set Omni7 to use the VCP RS232 Port instead of USB:

If disabling the VCP does not work, then some other USB device may be interfering with the USB driver. Using the VCP RS232 Port instead of USB in Omni7 may work.

- Make sure the 'Load VCP' is enabled (see the previous steps). **Restart the computer.**
- Check which COM Port number the **USB Serial Port (COM#)** is set to in Device Manager.



- Open Omni7 and select RS232, then set the Port number to match. Click the green 'Connect' button (a TruTrack Data Logger must be connected via a USB download cable attached to the computer).

