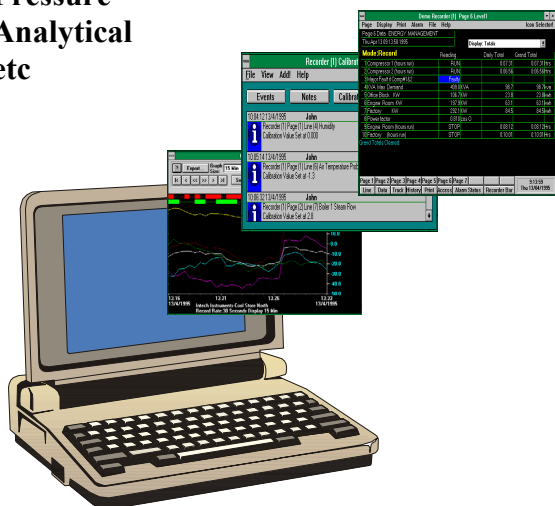


2100-A₁₆ ME Logger

20 channel logger with outputs for remote locations

Product Upgrade

Temperatures
Flow meters
pH
Level
Pressure
Analytical
etc



16 Channels individually configurable
Thermocouples
RTD
mA
mV
V

4 digital /on off inputs

2 alarm / control relay outputs

16 on Board alarms / controllers



2100-A₁₆-ME with memory Bd fitted

RS232 Download

- Real time graph & data screens.
- Flow totalising on analogue and pulse outputs from flow meters
- Historical Search
- Historical Retrieval
- Historical Replay
- File Joining (continuous record)
- Scaling to engineering units

Memory Storage Capacity

Optional = 32,000 readings per channel

Scan Rate

2 seconds to 1 hour in adjustable increments

Power Supply

From 12V dc/ac to 265V ac/dc

Specifications:

Analogue Inputs: 16 Differential, 16 Bit A/D

Each Input can be individually software selected and scaled within the following span limits.

mV:	- 500~500mV
V:	-15~15V
mA:	-100~100mA (4~20mA default)
RTD (Pt100 or Pt1000):	-200~850°C (-330~1550°F)
Note: On selectable. All Pt selections will be either Pt100 or Pt1000	
Thermocouple: K & N	-200~1300°C (-330~2400°F)
J	-200~1200°C (-330~2200°F)
T	-200~ 400°C (-330~750°F)
R & S	0~1700°C (0~3000°F)
B	250~1800°C (500~3000°F)
E	-200~900°C (-330~1650°F)

Differential Inputs: 18V maximum

Accuracy

± 0.1% FSO typical

Digital Inputs:

4 Digital Opto Isolated Inputs
5~30V dc

Max input frequency:

50 Hz typical on/off and count.
LED Indication on each Channel,
2 normally open contact outputs,
form A.

Relay Outputs:

Contact rating = 30V dc. 1 amp
LED Indication on each Channel
Isolated RS422, RS485, RS232
Comms failure alarm

Communications:

9600 (default), 4800, 2400 selectable.
Radio & Modem compatible.

Comms Baud Rate:

Power Supply:

85~264V ac/dc
23~90V dc selectable
10~28V ac/dc optional
Power Supply consumption 10VA

Intech INSTRUMENTS LTD