

### Plug-in Transmitters - 4 Wire



PI-Series

- Input and output ranges are field programmable.
- Bi-polar - Input and output signals.
- 1.6 kV isolation.
- 0.1% accuracy.
- Plug-in - DIN rail mount base.
- Special calibration available.

### Loop Powered Transmitters



LPI-Series



LPN-R-H

- Output, 4~20mA loop powered.
- 2kV isolation.
- 0.1% accuracy.
- 40~200mV output test signal.

### Humidity Transmitters



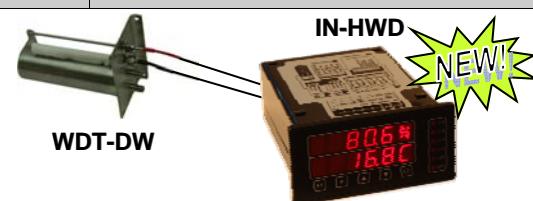
LPN-H-W



LPN-H-D

- Output, 4~20mA loop powered.
- Dual 4~20mA outputs for RH and Temperature.
- Monolithic IC humidity sensor.

LPN-H-W	Humidity & Temperature Transmitter, Wall Model
LPN-H-D	Humidity & Temperature Transmitter, Duct Mounting
LPN-H-F	Optional 100mm Flange for LPN-H-D
IN-HWD	Humidity & Temp Transmitter - Wet & Dry Bulb
IN-HWD-DIN	Humidity & Temp Transmitter - Wet & Dry Bulb - DIN Rail Mount.
WDT-DW	Wet & Dry Humidity Tank & Probe Assembly



WDT-DW

IN-HWD

### Pressure Transmitters



LPN-DP

- 4~20mA loop powered.
- Temperature compensation.

LPN-DP-100mm	
LPN-DP-250mm	LPN-DP-100kPa
LPN-DP-1000mm	LPN-DP-3/15 psi
LPN-DP-40kPa	LPN-DP-Bar

### XI Low Cost 4~20mA Isolators



XI-L1

XI-P1

XI-P1	XI-L1
XI-P2	XI-L2
XI-P4	XI-L4

- Input to Output Isolation 1kV.
- High Accuracy 0.1%.
- Reverse Polarity Protected.

### Electrochemical Transmitters



LPI-pH



LPI-DO2

- 4~20mA loop powered.
- LCD display.
- 2kV isolation.
- 0.1% accuracy.
- 40~200mV output test signal.
- LED indication of loop current.
- IP67 enclosure.

### Light Intensity Transmitter



TWN-LUX

**Light intensity transmitter.**  
 Power supply: 12~24Vdc.  
 Range: 0~1000 lux, adjustable to 0~10 kHz.  
 Dual outputs: 1x 4~20mA and 1x 0~10Vdc.

### Flow Meter Transmitter (loop powered)



LPI-F-E

**Frequency to DC isolating signal transmitter.**  
 Programmable Ranges from 0~15 Hz to 0~10 kHz.

LPI-F-E Field mount enclosure.

- Output, 4~20mA loop powered.
- 2kV isolation.
- 0.1% accuracy.
- 40~200mV output test signal.

### ZIGBEE-2400 Modules



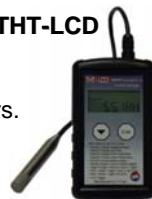
- RF Wireless Monitoring
- Networking

Zig-2400-RB
Zig-2400-sleeper
Zig-2400-TCP-MODBUS
Zig-2400-TCP-ACSII

### Data Loggers with LCD Display

- Up to 500,000 samples
- High accuracy 16 Bit
- User selectable sampling rate
- Sample rate from 1 sec to 10 hours.
- Battery life 1 to 5 years
- USB configuration and download

THT-LCD



HT-LCD	Humidity & Temperature
THT-LCD	Humidity & Dual Temperature
Tc-LCD	Thermocouple Temperature, Accepts Type J,K,N,R and T Probes via Universal Plug.
Pt-LCD	External Pt100/Pt500/Pt1000 Temperature
P-LCD	Pressure (Does not include pressure sensor)
P100-PS	Pressure Sensor for P-LCD, Range -15~100psi
P250-PS	Pressure Sensor for P-LCD, Range -15~250psi
P500-PS	Pressure Sensor for P-LCD, Range -15~500psi

# Intech Manufacture Popular Products 2010



## XU Transmitter Series

**XU2**  
2 Wire Transmitter Loop Powered



Isolated

- Programmable via USB.
- No power supply or calibration required during programming.
- Input types:

Thermocouple B, E, J, K, L, N, R, S, T  
 Pt100 & Pt1000  
 For RTD and Thermocouple; Output is Linear with Temperature.  
 mA, V, & mV \*  
 Potentiometer \*  
 32 point curve fitter for mA, mV, V inputs.\*  
 \* Not available in the XU2HI / XU2HN.

- Input to Output Isolation 3750Vac. (Excluding XU2HN)
- High Accuracy 0.1%.
- Reverse Polarity Protected.
- Heartbeat Status LED. (Excluding XU2HN)
- Case Temperature range -20°C to +80°C.
- Easy to Install.
- Low Cost.

**XU2HI / XU2HN**  
In Head 2 wire Loop Powered



Isolated / Non Isolated

**XU4**  
4 Wire Universal Transmitter



Isolated

Power Supply: 20~265Vac & 21~265Vdc

### Process Indicators - IN Series



Multifunction Indicator



Flow Rate With Totaliser



Flow Rate & Batching Controller

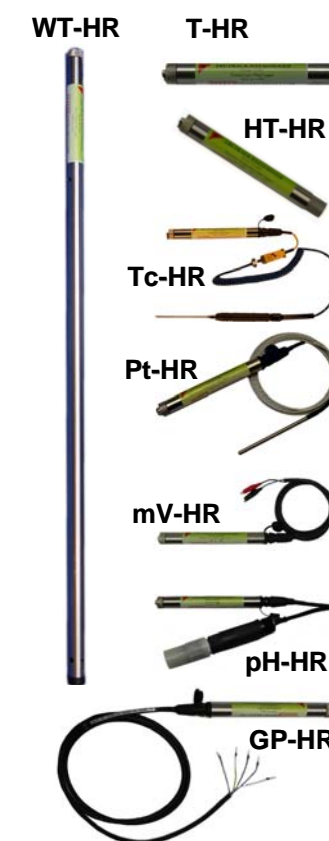
- Multiple Input Types.
- Simple Setup and Calibration.
- On Screen Step by Step Instructions.
- 5 Buttons for Easy Operation Interface.
- Option to Add Up to 6 Relay Outputs.
- Analogue Output Retransmission Option.
- Serial RS485/RS232 Port Option with Modbus RTU.
- Wide Range of Power Supply Options From 10V to 265V.

Tachometer with Relay



IN-R

### Data Loggers



#### HR Series

- Stainless steel case
- IP68 rating
- High Accuracy 12 bit
- Over 520,000\* samples can be stored (mk4)!

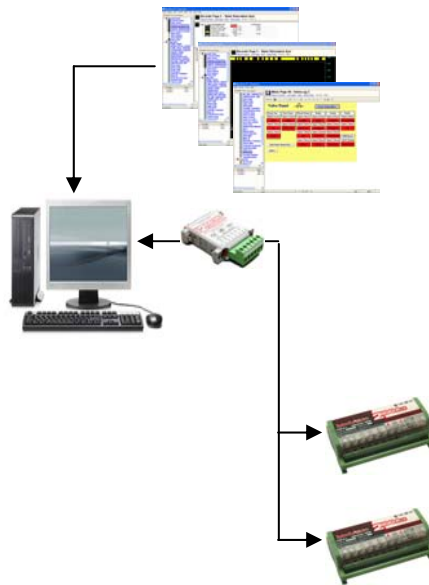
Model	Description
T-HR	Single temperature. IP68 rating.
HT-HR	Humidity and temperature. Range -30~70°C.
THT-HR	Humidity and dual temperature Range -30~70°C. 64,000 samples.
Tc-HR	Dual temperature. Thermocouple.
Pt-HR	Dual temperature, Pt100/Pt500/Pt1000, RTD.
mV-HR	milli-Volt. Range ±50mV / ±100mV / ±200mV / ±400 mV DC.
WT-HR	Water level, air temperature and water temperature. 64,000 samples
pH-HR	pH and temperature.
GP-HR	4 Input General Purpose Logger.
OmniLog	OmniLog software and DLC3USB [USB] or DLC3 [RS232] computer cable.

# Chart Recorder replacement packages

Add on the MA5

## MINI PACK 16 & 32

16 and 32 CHANNELS OF RECORDING  
Each input channel can be individually programmed to any of the following:  
Pt100, Pt100, Thermocouple, milli-amps, milli-volts, voltage.



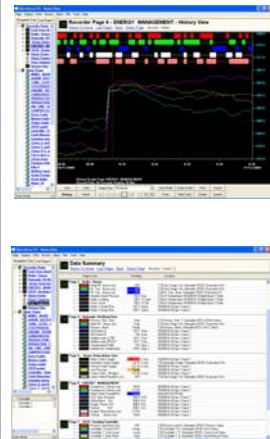
**SOFTWARE**  
MICROSCAN RECORDER LITE  
Features Below

**CONVERTER**  
INTECH MICRO 2100-NS  
RS232 to RS422/RS485

**HARDWARE**  
INTECHMICRO 2100-A16  
Field Stations

## MicroScan Recorder Features

### RECORDER MODULE (Also RECORDER LITE)



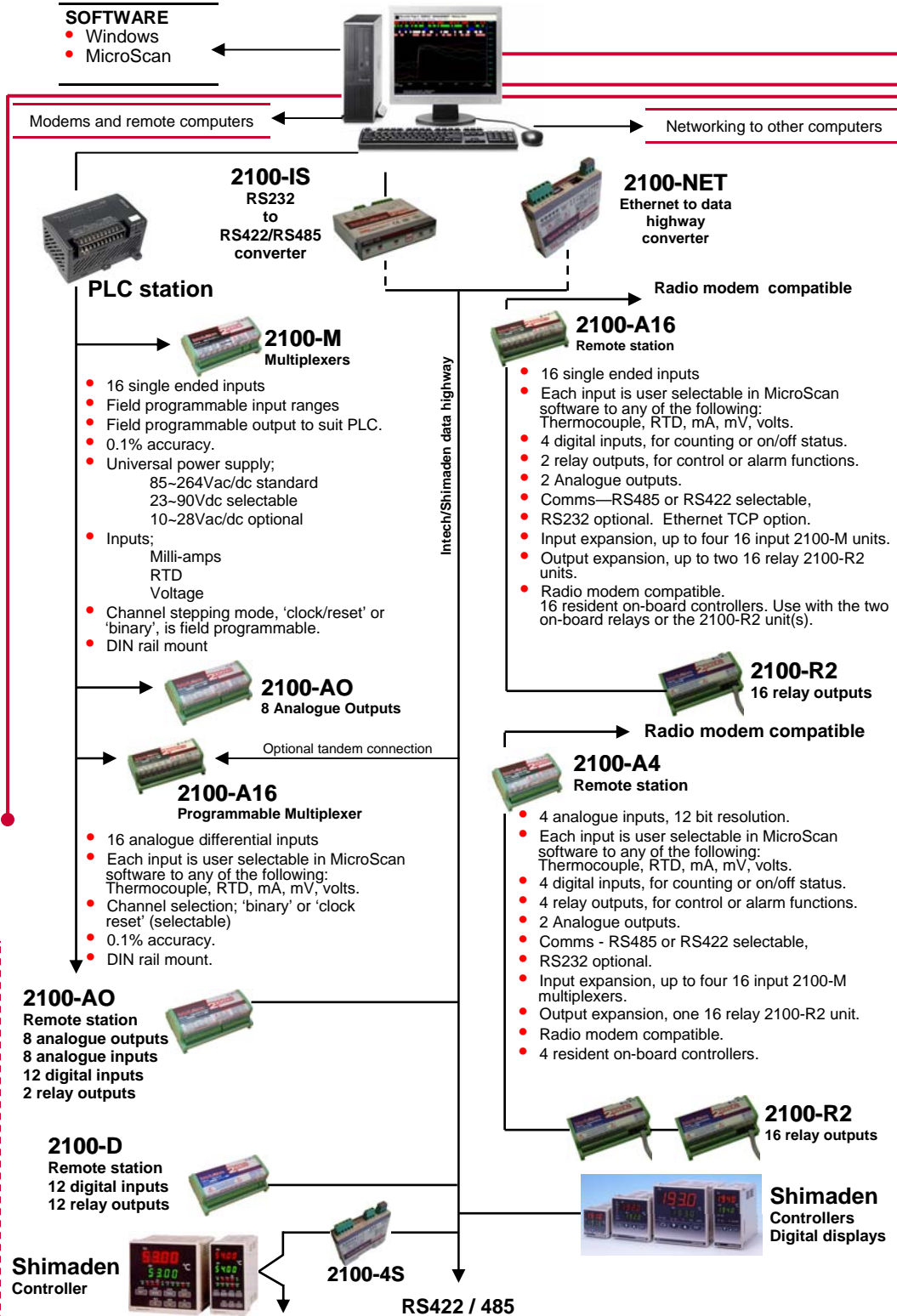
- Real-time line graphs
- Real-time data screens
- Data analysis
- Batch recording
- Continuous recording
- Mathematical blocks e.g.
  - subtraction
  - multiply
  - Sq. root
  - min/max
- Totalizing in engineering units.
- Total hours run facility
- Data logs to printer
- ISO 9000 support
- Data storage to disk
- Help screens.

- Historical retrieval
- Historical search
- History replay
- Function key support
- Alarm handling and printing
- Event handling and printing
- Comment entry by operators
- Report generator
- User log-on and audit
- DDE support
- Communicates with:
  - Intech field stations
  - Most PLC's
- (PLC option is not available with the Recorder Lite packages)
- Multi-level passwords
- Excel support

- MicroScan is a complete Windows based SCADA software product, meeting the demands of industrial, commercial, and research environments.
- Start off small with the world's best 'Recorder Module' for QA, mandatory data collections, plus plant wide monitoring, or jump straight into a full system with Recorder and Mimic (MMI) modules.
- Add the powerful 'Network Module' to share the data with managers, accountants, engineers, and others.



# Full SCADA Package Schematic

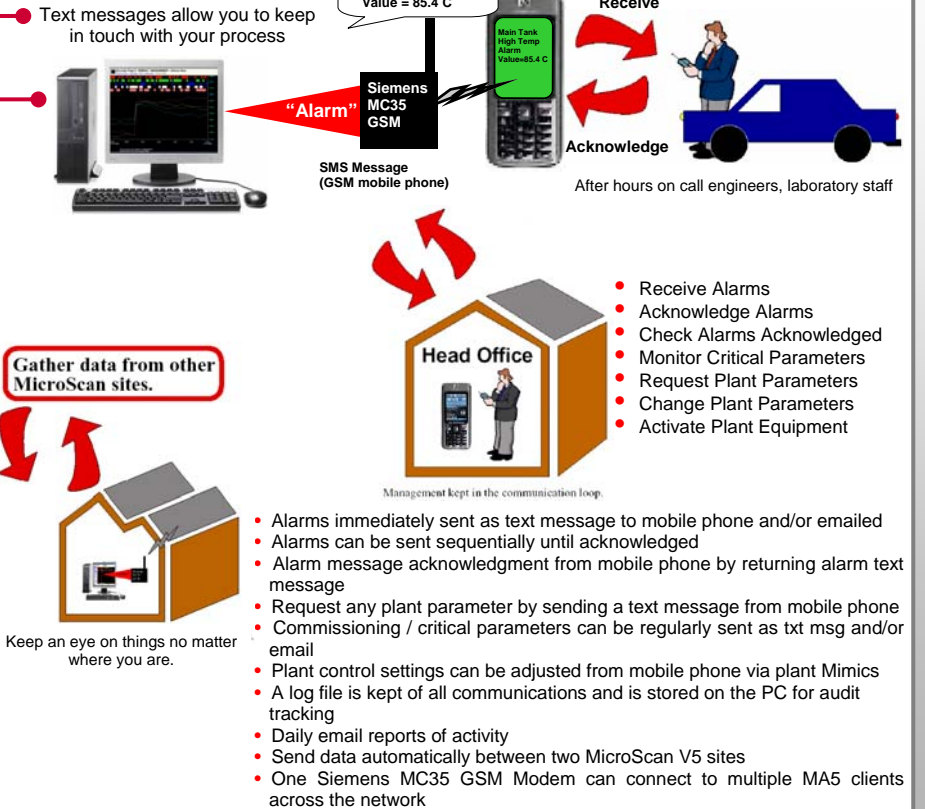


## 2100-A16 connects to PC plus PLC

The MicroScan system and the PLC can access the 2100-A16 multiplexer at the same time.



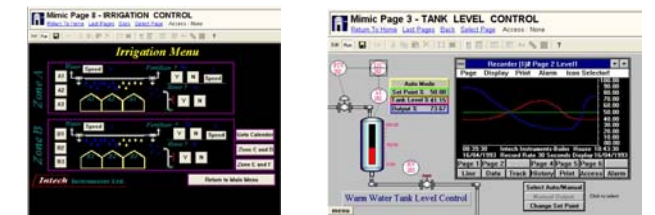
# MicroScan Mobile Alarm and Text Messaging - MA5



## MicroScan Mimics

### MIMIC MODULE

- Live screen graphics
- PLC operator control
- Current plant values and configuration
- Intech Micro remote station support
- Alarm handling and printing
- Alarm logs
- Controller support
- DDE support
- Network support
- Up to 512 on/off software controllers
- each with;
  - Set point with differential adjustment
  - Deviation high and low alarms



## 2300 Series - Input/Output Remote Stations

- Low Cost I/O Remote Stations
- Modbus RTU with Modbus TCP option
- MicroScan V5 Compatible Seamless Integration
- Plug-in connectors makes replacement easy
- Programmable Ranges within input type
- 1.0 kV or greater Isolation
- 0.2% Accuracy (12 Bit)
- Compact DIN rail mount
- Enclosure
- LEDs indicate I/O status plus comms and Power
- Supply
- Comms Fail Alarm (Optional)
- Power Supply: 24Vdc
- The Intech Micro 2300 series is a system of modular I/O Remote Stations, that add an even lower cost option to Intech's already extensive intelligent I/O Remote Station family, which connect automatically to the Intech MicroScan V5 logging plus SCADA software package.

