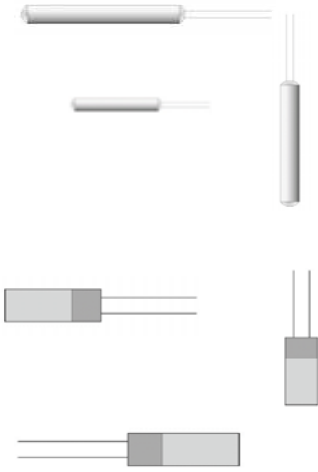


**Miscellaneous**



<b>RTD Elements.</b>			
CODE	DESCRIPTION		PRICE
<b>Pt100-min-A</b>	<b>Ceramic miniature.</b> Pt100 1.6ø x 15mm Class A.		\$26.00
<b>Pt100-min-4</b>	Pt100 1.6ø x 15mm Band 4.		\$47.00
<b>Pt100-min-5</b>	Pt100 1.6ø x 15mm Band 5.		\$57.00
<b>Pt100-std-A</b>	<b>Ceramic standard.</b> Pt100 3.0ø x 15mm Class A.		\$26.00
<b>Pt100-std-4</b>	Pt100 3.0ø x 15mm Band 4.		\$47.00
<b>Pt100-std-5</b>	Pt100 3.0ø x 15mm Band 5.		\$57.00
<b>Pt100-dup-A</b>	<b>Ceramic duplex.</b> Pt100 3.0ø x 15mm Class A. Duplex.		\$72.00
<b>Pt100-FF-A</b>	<b>Flat film.</b> Pt100 5 x 2mm Class A.		\$26.00
<b>Pt500-FF-A</b>	Pt500 10 x 2mm Class A.		\$26.00
<b>Pt1000-FF-A</b>	Pt1000 10 x 2mm Class A.		\$26.00
<b>Options</b>			<b>Add price</b>
	Element fitted with 2 wire PTFE tails 350mm.		\$15.00
	Element fitted with 3 wire PTFE tails 350mm.		\$23.00
	Duplex element fitted with 4 wire PTFE tails 350mm.		\$32.00
	Pt100-std c/w tails		\$41.00



<b>Heat transfer paste.</b>		
Non Silicone Heat Transfer Compound with exceptional thermal conductivity. Wide temperature range with good non creep properties make it ideal for numerous applications, where thermal control is necessary.		
<b>HSC</b>	Heat sink compound. Non-toxic, non-silicone. 35ml Syringe.	\$30.00

**Jumo VIBROtemp**

**Screw-in Pt100 sensors with plug connector.**



MODEL	DESCRIPTION	PRICE
<b>VIBROtemp-S</b>	<b>Pt100 RTD c/w Silicone Lead</b> Two threads ½” BSP and 1/8”-27 NPT (specify when ordering). Temperature range; -50 to +300°C JUMO Datasheet; 90.2040	\$175.00
<b>VIBROtemp</b>	Replacement probe (no cable) Two threads ½” BSP and 1/8”-27 NPT (specify when ordering).	\$127.00

[www.intech.co.nz/vibrotemp](http://www.intech.co.nz/vibrotemp)

Shockproof screw-in Pt100 sensors enable temperature measurement under pressure in motors, compressors, plant engineering and in ship building. Lloyd Application Category D Characteristic 2. The connection between the protection fitting and the connecting cable incorporates a locking system and has IP65 or IP69K protection rating when assembled.

The measuring insert is normally fitted with a Pt100 temperature sensor.

- ◆ for temperatures from -50 to +300°C
- ◆ highly resistant to shock and vibration
- ◆ connector locked in for reliable contact, IP65 or IP69K protection

# Digital pH meter



[www.intech.co.nz/202710](http://www.intech.co.nz/202710)

## Jumo pH meter

MODEL	DESCRIPTION	PRICE
202710/20	<p><b>Hand held digital pH, ORP &amp; temperature meter.</b>  <i>Manual and Automatic temperature compensation.</i></p> <ul style="list-style-type: none"> <li>◆ 0 to 14pH Range @ +/- 0.01 Accuracy</li> <li>◆ Min &amp; Max Memory &amp; 'HOLD' Function</li> <li>◆ Adjustable Auto Switch Off</li> <li>◆ Clear 2-line LC Display</li> <li>◆ Battery Condition Display</li> <li>◆ IP65 (Front Panel)</li> <li>◆ Input: pH probe, BNC connection</li> </ul> <p>JUMO Datasheet; 20.2710</p>	\$798.00
Insertion	<p><b>pH probe.</b>  <i>Insertion electrode with silicone handle.</i>                      Insertion tip 6mm diameter.                      Two ceramic diaphragms.                      KCI reference electrolyte (free from Ag ions)                      1m attached cable and BNC plug.</p> <p><b>Applications</b>                      Food industry for insertion measurement in meat, fruit, sausage, cheese, dough and other semi-solid foodstuffs.                      Measurement in soils.                      Measurement in small liquid samples.</p>	\$415.00
Glass	<p><b>pH probe.</b>  <i>Glass combination electrode with silicone handle.</i>                      Spherical membrane.                      Ceramic diaphragm.                      KCI reference electrolyte (free from Ag ions)                      1m attached cable and BNC plug.</p> <p><b>Applications</b>                      General aqueous media, drinks industry, electroplating, factory laboratory, fish farming, aquarium, chemicals, waste water plants, pharmaceuticals, drinking water.</p>	\$330.00
Plastic	<p><b>pH probe.</b>  <i>Plastic shaft electrode with silicone handle.</i>                      Spherical membrane with protection basket.                      Glass fibre diaphragm.                      KCI reference electrolyte (free from Ag ions)                      1m attached cable and BNC plug.</p> <p><b>Applications</b>                      Unbreakable plastic shaft with protection basket for heavy duty applications.                      General aqueous media, drinks industry, electroplating, factory laboratory, fish farming, aquarium, chemicals, waste water plants.</p>	\$330.00



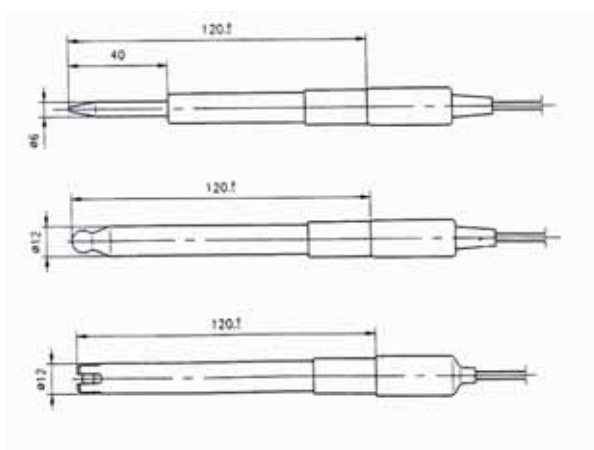
Insertion



Glass combination



Plastic shaft



**pH Probes for wastewater, heavily polluted media, suspensions & varnishes tecLine (201020 Series)**

Applications:

- ◆ Industrial wastewater engineering
- ◆ Process measurements, electroplating plant, paper industry, drinks industry
- ◆ Wastewater containing oil
- ◆ Suspensions, varnishes, media containing solid particles
- ◆ 2-chamber system in the presence of electrode poisons
- ◆ Media containing fluoride (hydrofluoric acid) up to 1000mg/l HF

Key features:

- ◆ Pressure-resistant versions up to 10 bar (50°C)
- ◆ Temperature probes can optionally be integrated
- ◆ JUMO Datasheet; 20.1020

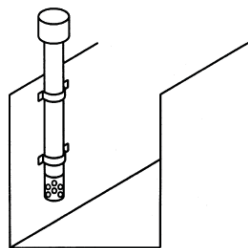
[www.intech.co.nz/tecline](http://www.intech.co.nz/tecline)



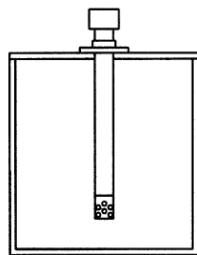
MODEL	DESCRIPTION	PRICE
<b>tecLine</b>	Glass shaft, gel sealed, PTFE Diaphragm, S8 threaded cap.	\$405.00
<b>tecLine PRO</b>	Glass shaft, gel sealed, annular gap diaphragm & Solid electrolyte SMEK threaded cap, 120mm Salt reservoir with integrated Pt100 probe.	\$620.00

**Installation options**

Standard

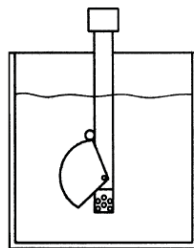


Fixing with pipe clips in the inlet channel

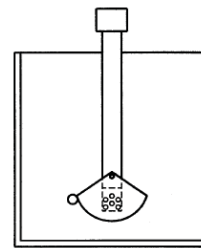


Fixing with a flange on a container

Use of a wetting cup



with the container filled



with empty container (residual liquid in the cup prevents the sensor from running dry)



**pH Probe Holders Immersion Fittings (202820 Series)**

Immersion fittings are used for holding electrochemical sensors.

The fittings are mounted in open sluices or containers. They protect the installed sensor from breaking and enable measurement in different immersion depths.

JUMO Datasheet; 20.2820

[www.intech.co.nz/phif](http://www.intech.co.nz/phif)

MODEL	DESCRIPTION	PRICES from
<b>PHIF-40</b>	Polypropylene (FPM seals), 500~2000mm lengths.	\$320.00 to \$540.00
<b>PHIF-63</b>	Polypropylene (FPM seals), 500~2000mm lengths. For 1~3 sensors.	\$1125.00 to \$1620.00

**Conductivity Cells ecoLine Lf-PVC Electrolytic (202923 Series)**

- ◆ 2-electrode principle
- ◆ proven versions for industrial application
- ◆ measuring ranges; 0~1 mS/cm (=0.1) or 0.01~15 mS/cm (=1.0)
- ◆ temperature range up to 55°C, maximum pressure; 6 bar at 20°C
- ◆ JUMO Datasheet; 20.2923

[www.intech.co.nz/lf-pvc](http://www.intech.co.nz/lf-pvc)



MODEL	DESCRIPTION	PRICE
<b>Lf-PVC-g</b>	Range 0.01~15mS/cm, Pt100, 3/4", Din, PVC, graphite	\$608.00
<b>Lf-PVC-s</b>	Range 0~1.0mS/cm, Pt100, 3/4", Din, PVC, stainless	\$589.00

## pH Controller

### JUMO dTRANS pH 01 µP Transmitter / Controller for pH or redox potential (ORP)



Panel-mounting instrument: 96 x 48 x 110 mm



Wall-mounting housing: IP67 protection

[www.intech.co.nz/ph01](http://www.intech.co.nz/ph01)

#### Key features

- ◆ Display pH or mV/ORP and temperature
- ◆ Switchable from pH to mV/ORP (redox potential)
- ◆ 2 relays as standard, freely programmable as limit controller or P, PI, PID, PD controller with pulse width/ pulse frequency output or modulating controller
- ◆ 2 electrically isolated analogue outputs 0(4)~20mA / 0(2)~10V freely configurable as process value output for pH, redox or temperature, or for continuous controllers (option)
- ◆ 2 logic inputs
- ◆ Temperature of medium can be monitored
- ◆ Simple, step-by-step calibration procedure
- ◆ OPTION: Profibus-DP or serial interface RS485/422 with Modbus/Jbus protocol
- ◆ Panel-mounting housing to DIN 43 700, front protection IP65.
- ◆ JUMO Datasheet; 20.2530

MODEL	DESCRIPTION	PRICE
<b>dTRANS pH 01</b>	Panel-mounting instrument; 96 x 48 x 110 mm c/w Output 1 relay	\$2250.00
<b>Options:</b>	Output 2 relay PV out 1 PV out 2 RS485/422 (with Modbus) Profibus-DP Logic output Wall-mounting housing: IP67 protection	<b>Add:</b> \$135.00 \$180.00 \$290.00 \$260.00 \$985.00 \$98.00 \$498.00

### Jumo ecoTRANS Lf 01/02

#### Microprocessor Transmitter /Switching Device for Conductivity



#### Microprocessor Transmitter /Switching Device for Conductivity

3-way isolation (input, output and supply)  
DIN rail mounting  
1 LED, two colours (red/green), for signalling operating states  
Calibration timer  
Customized characteristic for temperature probe can be input (e.g. NTC, PTC)  
Reference temperature is settable  
JUMO Datasheet; 20.2731

MODEL	DESCRIPTION	PRICE
<b>ecoTRANS Lf 01</b>	One electrically isolated analogue output 0(4)~20mA / 0(2)~10V	\$830.00
<b>ecoTRANS Lf 02</b>	One relay output Teach-in function (definition of switching point through the teach-in connector)	\$790.00

[www.intech.co.nz/lf01](http://www.intech.co.nz/lf01)

The areas of application for safety temperature limiters or monitors ((S)TB or (S)TW) are to be found wherever thermal processes need to be monitored, and where the system must be set to a safe condition in the event of a fault. If the permitted temperature limit is reached or a fault occurs within the permitted temperature range (probe/cable break, short-circuit, component defect, power failure), then the instrument switches off without any delay.

**Jumo**

**Temperature Limiter/Monitor Devices**

MODEL	DESCRIPTION	PRICE
<b>STB-Tc</b>	<p><b>Electronic Safety Temperature Limiter.</b>                      Safety temperature limiter with O-function.                      Input; Type K thermocouple                      Ranges; 200~600°C or 600~1000°C (specify)                      Switching differential; 30°C Internal reset button.                      Power supply; 230Vac                      Protection; IP20                      JUMO Datasheet; 70.1130</p>	\$1325.00
<b>STB-Pt</b>	<p><b>Electronic Safety Temperature Limiter.</b>                      Safety temperature limiter with O-function.                      Input; Pt100                      Range; 0~400°C                      Switching differential; 10°C Internal reset button.                      Power supply; 230Vac                      Protection; IP20                      JUMO Datasheet; 70.1130</p>	\$1155.00
<b>TB/TW</b>	<p><b>Programmable TB/TW Temperature Limiter/Monitor.</b></p> <ul style="list-style-type: none"> <li>• Setup program for configuration and archive data backup.</li> <li>• Clear, easy-to-read alphanumeric display.</li> <li>• Digital input filter with adjustable filter time constant.                             <ul style="list-style-type: none"> <li>• adjustable as absolute value or relative to limit value.</li> </ul> </li> </ul> <p>Input; Pt100/Pt1000/Thermocouple/Volts/mA                      Interface; USB, type Mini-B (cable included)                      Power supply; 230Vac                      Protection; IP20                      JUMO Datasheet; 70.1160</p>	\$650.00



STB

[www.intech.co.nz/stb](http://www.intech.co.nz/stb)



TB/TW

[www.intech.co.nz/tb-tw](http://www.intech.co.nz/tb-tw)

**Features:**

- ◆ Heating or cooling is configurable
- ◆ Limit monitoring
- ◆ Available for RTD or Thermocouple input - specify when ordering (mA or V available on special request)
- ◆ 10A relay (changeover contact)
- ◆ Adjustable switching hysteresis
- ◆ Simple, space saving installation
- ◆ Time-delayed switch-on after power-on is selectable, e.g. for staggered starting of several equipment units
- ◆ 3-digit LC display with special characters for °C and °F
- ◆ Parameter level protected by code

**Digital Thermostat**

[www.intech.co.nz/etront](http://www.intech.co.nz/etront)

**Jumo eTRON T**

**Digital Thermostat.**

MODEL	DESCRIPTION	PRICE
<b>eTRON T</b>	<p><b>Digital thermostat with LCD display.</b>                      Protection; IP20.                      Operating position; Unrestricted.                      Temperature; Ambient, 0~55°C                      Span; Min span is 10% of range.                      Ranges; Specify when ordering from the options below:                      RTD, Pt100 &amp; Pt1000: -200~600°C                      Thermocouple, Types K, J, L: -200~999°C                      Sampling time; 250 msec.                      Housing; Polycarbonate.                      Power Supply; 230Vac or 12~24Vdc (specify when ordering).                      JUMO Datasheet; 70.1050</p>	\$325.00



## Pressure transmitters

JUMO



Midas S05

Bar
-1 / +9
-1 / 24
0.25 *
0.4 *
0.6 *
1.0
1.6
2.5
4
6
10
16
25
40
60

Bar
-1 / 0
-1/9
0.25
0.4
0.6
1
2.5
4
6
10
16
25
40
60
100
160
250
400
600
0 - 0.6 bar absolute
0 - 1 bar absolute



P30-571

Bar
0.25
0.4
0.6
1
4
6
10
16
25



P30-613

Bar
0.4
0.6
1



Midas HP

Bar
100
250
400
600

## Midas pressure transmitters.

[www.intech.co.nz/midas](http://www.intech.co.nz/midas)

MODEL	DESCRIPTION	PRICE
<b>Midas S05</b>	<b>Pressure transmitter. 2 wire, loop powered.</b> Protection; IP65. Process connection; ¼" BSP. Wetted parts; Stainless steel. Mounting position; Unrestricted. Temperature; Medium, -30~125°C Ambient, -20~125°C Output; 4~20mA. 2 wire, loop powered. U <sub>T</sub> = 10~30Vdc. Load resistance; R <sub>L</sub> = (U <sub>S</sub> -10V) / 0.02A. max. Range; Ranges in gauge pressure; from -1~9 bar to -1~24 bar. and from 0~1.0 bar to 0~60 bar.	\$398.00
<b>* Midas SI</b>	Range; from 0~0.25 bar to 0~0.6 bar. JUMO Datasheet; <b>S05</b> = 40.1010 <b>SI</b> = 40.1006	\$398.00
<b>Cable</b>	Angled socket M12 2m cable	\$55.00
<b>Midas HP</b>	High pressure version of Midas S05 / SI - as above except: Range; from 0~100 to 0~600 bar. JUMO Datasheet; 40.1005	\$498.00

[www.intech.co.nz/p30](http://www.intech.co.nz/p30)

## dTRANS P30 pressure transmitter.

<b>P30-504</b> <b>P30-571</b> <b>P30-613</b>	<b>Pressure transmitter. 2 wire, loop powered.</b> Protection; IP65. Wetted parts; Stainless steel. Mounting position; Unrestricted. Temperature; Medium, -30~120°C Ambient, -20~100°C Output; 4~20mA. 2 wire, loop powered. U <sub>T</sub> = 10~30Vdc. Load resistance; R <sub>L</sub> = (U <sub>S</sub> -10V) / 0.02A. max. Range; Ranges in gauge pressure; from -1~0 bar to -1~9 bar. and from 0~0.25bar to 0~600bar. Also some ranges in absolute pressure are available. <b>Standard;</b> Process connection; ½" BSP. <b>Flush diaphragm;</b> Process connection; ¾" BSP. <b>Sanitary;</b> Process connection; 1½" triclover. JUMO Datasheet; 40.4366	\$965.00 \$998.00 \$1055.00
Midas ¼" BSP Adaptor	Adaptor to ¼" BSP taper c/w Teflon Crush Washer	\$36.00
Midas ¼" NPT Adaptor	Adaptor to ¼" NPT taper c/w Teflon Crush Washer	\$36.00
P30 ½" Adaptor	Adaptor to ½" BSP taper c/w Teflon Crush Washer	\$55.00

EINTEK



## LR-Display Plug in Display. Loop powered.

MODEL	DESCRIPTION	PRICE
<b>LR-Display</b>	<b>Plug in Display. Loop powered.</b> Input; 4~20mA, 2 wire. Display; 4-digit; 7.6mm height. Housing; Plastic. Protection; IP65.	\$290.00

LR-Display shown  
with JUMO P30-504  
Pressure Transmitter.

The high-precision, electronic pressure switch JUMO DELOS SI provides flexible application due to its switching outputs, analogue output and an LC display to visualise the process pressure and switching contact statuses. Due to its stainless steel housing and the seal-less measuring system, it is also perfectly suitable for use in hygienically sensible areas.

A variant of this system in a high-temperature design resistant to temperatures of up to 200°C can be used especially for measuring tasks on hot media and lines.

Depending on the application, the following output variants are available: 2 x PNP switching output or 1 x PNP switching output and one analogue output signal. The configuration of the output signal and the measuring range can be customised.

<b>Key features:</b>		
<ul style="list-style-type: none"> <li>◆ Linearity 0.1%</li> <li>◆ Measuring range scaling 1 : 4</li> <li>◆ Two-colour display with alarm function</li> <li>◆ Analogue output can be freely configured</li> <li>◆ 100°C medium temperature</li> <li>◆ Programming is either local or via set-up</li> <li>◆ JUMO Datasheet; 40.5052</li> </ul>		
MODEL	DESCRIPTION	PRICE
<b>DELOS SI</b>	<b>Precision pressure transmitter with switching contacts and display.</b>	
	Input Ranges;           0~4bar, 0~10bar, 0~25bar (specify) Power supply;           12~30Vdc Protection;             IP67 Output options;        2x PNP switching output; OR 1x PNP output + 1x 4~20mA	\$770.00 \$840.00
<b>Software</b>	Setup program and connection cable.	\$385.00



[www.intech.co.nz/delossi](http://www.intech.co.nz/delossi)

**dTRANS T01 Programmable temperature transmitter.**

**Temperature transmitter**

MODEL	DESCRIPTION	PRICE
<b>dTRANS T01</b>	<b>Programmable temperature transmitter. 2 wire, loop powered.</b>	\$288.00
	Mount;                    In probe terminal head. Size;                      Diameter 44mm. Operating temperature;   -40~85°C. Isolation;                Input/output electrically isolated. Configuration;           Via Windows setup program. Input;                     Programmable to any of the following; Thermocouples;       CJC adjustable 0~80°C. Type; L, J, U, T, K, E, N, S, R, B, D, C. RTD; 2, 3 or 4 wire connection. Type; Pt100, Pt500, Pt1000, Ni100, Ni500, Ni1000. Range;                    Ranges are programmable. Output;                   4~20mA. 2 wire, loop powered. Inversion possible. $U_T = 8\sim35Vdc$ . Load resistance; $R_L = (U_S - 8V) / 0.022A$ . max. <b>Other Mounting options available</b> JUMO Datasheet;        95.6550 (70.7010)	
Options	<b>HART communication</b> 95.6551 (70.7011)	\$287.00
	DIN Rail mount foot	\$20.00
Software	<b>Setup Software and Interface cable</b>	POA



[www.intech.co.nz/t01](http://www.intech.co.nz/t01)



## Level transmitter



4390



4391

### Features:

- ◆ Two wire 4~20mA submersible transmitter.
- ◆ High accuracy < 0.5%.
- ◆ 3x Overpressure - up to 40 bar.
- ◆ Surge and Reverse polarity protection.
- ◆ Integrated OVP (Lightning) protection.

## JUMO Level probe for liquids.

[www.intech.co.nz/4390](http://www.intech.co.nz/4390)

MODEL	DESCRIPTION	PRICE
	<b>Level transmitter (4390 stats):</b> Housing; 225mm x ø25mm, stainless steel. Protection; IP68. Cable; polyurethane ø 9mm. Accuracy; on full scale, < 0.5%. Operating temp; 0~50°C. Temp coefficient; ±0.2% / 10°C. Output; 4~20mA, 2 wire, loop powered. U <sub>T</sub> = 10~30Vdc. Load resistance; max. R <sub>L</sub> = (U <sub>S</sub> -9V) / 0.02A. JUMO Datasheet; 40.4390 and 40.4391	
	Standard ranges; 4391-242-1.0 0~1 metre H <sub>2</sub> O, with 10 metres of cable. 4390-242-2.5 0~2.5 metres H <sub>2</sub> O, with 10 metres of cable. 4390-242-4.0 0~4 metres H <sub>2</sub> O, with 10 metres of cable. 4390-242-6.0 0~6 metres H <sub>2</sub> O, with 10 metres of cable. 4390-242-10 0~10 metres H <sub>2</sub> O, with 15 metres of cable. 4390-242-25 0~25 metres H <sub>2</sub> O, with 30 metres of cable. 4390-242-40 0~40 metres H <sub>2</sub> O, with 50 metres of cable. 4390-242-60 0~60 metres H <sub>2</sub> O, with 65 metres of cable. Other ranges and cable lengths are available on request.	\$1415.00 \$1030.00 \$1030.00 \$1030.00 \$1125.00 \$1390.00 \$1750.00 \$2155.00

### Accessories.



Terminal Housing

Cable holder

MODEL	DESCRIPTION	PRICE
<b>Terminal Housing</b>	Terminal Housing with pressure equilibration (Pt No 00061206). ◆ Built in breather to maintain accuracy ◆ Rugged heavy case to avoid distortion and ingress of moisture ◆ Convenient termination point	\$130.00
<b>Cable Holder</b>	Cable Holder (Pt No 00061389).	\$60.00

### Overvoltage protection.

We recommend that an overvoltage protection device is used with the JUMO 4390 / 4391 / IN-LLT if long runs of cable are involved in the installation, to protect against potential Lightning strike or earth potential rises. Note that the JUMO 4390 & 4391 have integrated OVP protection in their probe. For best possible protection in Lightning prone areas, we recommend using OVP protection at both ends of the installation.



MODEL	DESCRIPTION	PRICE
	Leakage Current; 10µA @ 24Vdc. Transient cut-off voltage; 32V standard (Other ranges available on request). Added line resistance; 28 ohms for the loop.	
<b>LPN-OVP-D</b>	Din rail mount.	\$124.00
<b>LPN-OVP-E</b>	IP67 enclosure, c/w glands.	\$168.00
<b>LPN-OVP-G</b>	Spare set of 3 discharge tubes.	\$30.00

**IN-LLT-C**  
**Submersible Level Transmitter for Water applications.**

MODEL	DESCRIPTION	PRICE
<b>IN-LLT-C</b>	<b>Submersible Level transmitter:</b> Housing; 92mm x ø26mm, stainless steel. Protection; IP68. Cable; polyethylene ø 9mm. Accuracy; on full scale, 0.5%. Operating temp; -10~80°C. Temp coefficient; ±0.2% / 10°C. Output; 4~20mA, 2 wire, loop powered. U <sub>T</sub> = 12~28Vdc. Load resistance; <(U <sub>v</sub> -12)/0.02	
<b>A</b>	Standard ranges; 0~1 metre H <sub>2</sub> O, with 10 metres of cable.	\$680.00
<b>B</b>	0~5 metres H <sub>2</sub> O, with 10 metres of cable.	\$680.00
<b>C</b>	0~10 metres H <sub>2</sub> O, with 15 metres of cable.	\$700.00
<b>D</b>	0~20 metres H <sub>2</sub> O, with 30 metres of cable.	\$760.00
<b>E</b>	0~50 metres H <sub>2</sub> O, with 60 metres of cable.	\$880.00
<b>F</b>	0~100 metres H <sub>2</sub> O, with 110 metres of cable.	\$1080.00
<b>G</b>	0~200 metres H <sub>2</sub> O, with 210 metres of cable. Other ranges and cable lengths are available on request.	POA



**Features:**

- ◆ Two wire 4~20mA submersible transmitter.
- ◆ High accuracy 0.5% FS.
- ◆ Overpressure 2x FS

[www.intech.co.nz/in-llt](http://www.intech.co.nz/in-llt)

For Overvoltage (Lightning) protection with the IN-LLT-C please see previous page.

**Custom built - Jumo**  
**Submersible level transmitter.**

MODEL	DESCRIPTION	PRICE
<b>IN-LLT-M</b>	<b>Level transmitter.</b> <b>Transmitter enclosed in a 316 SS envelope.</b> Output; 4~20mA loop powered. Diameter; Max 90mm. Ranges; From 0~2.5m to 0~100m. Transmitter; Jumo Midas (fixed range) Standard. Up to 100m.	\$928.00
<b>IN-LLT-P</b>	Transmitter; Jumo P30-504 (zero & span adjustable). Standard. Up to 100m.	\$1495.00
<b>IN-LLT-F</b>	Transmitter; Jumo P30-571. Flush diaphragm. Up to 100m.	\$1528.00
	For each metre greater than 10m. add per metre.... For depths greater than 100m, contact Intech.	\$13.00
<b>IN-LLT-J</b>	<b>Level transmitter.</b> <b>Transmitter modified for hose adaptor.</b> Output; 4~20mA loop powered. Diameter; Max 35mm. Ranges; From 0~2.5m to 0~100m. Transmitter; Jumo P30-504. Standard. Up to 100m.	\$1365.00
<b>IN-LLT-JF</b>	Transmitter; Jumo P30-571. Flush diaphragm. Up to 100m.	\$1398.00
	For each metre greater than 10m. add per metre.... For depths greater than 100m, contact Intech.	\$13.00



[www.intech.co.nz/slt](http://www.intech.co.nz/slt)

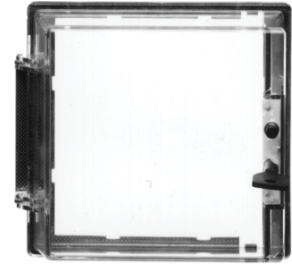


For Overvoltage (Lightning) protection with the Custom built IN-LLT please see previous page.

Lockable clear protection covers are available for protection against mechanical damage and unintentional or unauthorised manipulation, as well as protecting against dust and splashing water.  
The panel mounting instrument (eg. Controller) is passed through the cover frame and pushed into the panel cut-out, where it is secured from behind.

**Jumo**

**Protection cover AK-96**



[www.intech.co.nz/ak-96](http://www.intech.co.nz/ak-96)

MODEL	DESCRIPTION	PRICE
AK-96	<b>Protection cover.</b> Lockable (plastic lock) High-impact clear plastic (polycarbonate) Heat-resistant up to 130°C Suitable for flush-panel mounting instruments with 96 x 96mm bezel Protection; IP65 JUMO Datasheet; 70.9710	\$138.00

**SR253 Digital controllers.**

- ◆ Autotuning controller with expert PID processing.
- ◆ Inputs; Thermocouple, RTD, Current, Voltage.
- ◆ Outputs; Current, SSR drive, Voltage, Relay.
- ◆ Remote setting, analogue or digital.
- ◆ Timer functions.
- ◆ Ramp control (10 steps).
- ◆ Event output, Heater break alarm.
- ◆ Comms; RS232C, RS422A, RS485.
- ◆ Communicates with Intech software.
- ◆ Retransmission of process value or set value.
- ◆ Set value bias by digital input.
- ◆ High and low alarms.

MODEL	SIZE	BASE PRICE	OPTIONS	ADD PRICE
SR253	96 x 96	\$1310.00	Event outputs	\$180.00
			Retransmission	\$225.00
			Comms	\$270.00
			Second output	\$135.00



[www.intech.co.nz/sr253](http://www.intech.co.nz/sr253)

**FP93 Programmable ramp controllers.**

- ◆ Autotuning controller with expert PID processing.
- ◆ Inputs; Thermocouple, RTD, Current, Voltage.
- ◆ Outputs; Current, SSR drive, Voltage, Relay.
- ◆ Remote setting, analogue or digital.
- ◆ Timer functions.
- ◆ Set value bias by digital input.
- ◆ Ramp control, 10 steps per pattern.
- ◆ 4 Patterns.
- ◆ Comms; RS232C, RS485.
- ◆ Communicates with Intech software.
- ◆ Retransmission of process value or set value.
- ◆ High and low alarms.
- ◆ Event output, Heater break alarm.

MODEL	SIZE	BASE PRICE Includes Events	OPTIONS	PRICE
FP93	96 x 96	\$630.00	Retransmission	\$100.00
			Comms	\$160.00
			24Vac/dc Power Supply	\$90.00
			Status Output	\$80.00



[www.intech.co.nz/fp93](http://www.intech.co.nz/fp93)