

pH sensors



Model 10 – General purpose ½” NPT pH sensor.

Temperature: -5~80°C.
 Pressure: 0~100 psi.
 Cable length: 3 metres.
 Ref. cell: Single junction, KCl/AgCl.
 Ref. junction: Porous teflon.
 Applications: Non toxic solutions e.g. Potable water, cooling towers, fresh/salt water aquariums.

MODEL	DESCRIPTION	PRICE
M-10	Model 10 General purpose ½” NPT pH sensor.	\$310.00
M-10-ORP	Model 10-ORP General purpose ½” NPT ORP sensor. Used for Redox measurement in relatively clean waters.	\$375.00

www.intech.co.nz/m10



Model 11 – General purpose ¾” NPT pH sensor.

Temperature: 0~80°C.
 Pressure: 0~100 psi.
 Cable length: 3 metres.
 Ref. cell: Double junction, KNO₃ and KCl/AgCl.
 High resistance to electrode poisoning solutions.
 Applications: For both submersible and insertable use in process and waste water.

MODEL	DESCRIPTION	PRICE
M-11	Model 11 General purpose ¾” NPT pH sensor.	\$395.00
M-11-Pt100	Model 11-Pt100 General purpose ¾” NPT pH sensor. Includes a Pt100 sensor.	\$490.00
M-11-Pt100-HT	Model 11-Pt100-HT General purpose ¾” NPT pH sensor. High temp. version including a Pt100 sensor. High temperature: 0~110°C. High pressure: 0~150 psi. Do not use where ethers, ketones and most aromatic hydrocarbons are present. If these solvents are present use the standard version regardless of the temperature.	\$575.00
M-11-ORP	Model 11-ORP General purpose ¾” NPT ORP sensor. Used for Redox measurement in waste water treatment. Platinum sensing element.	\$490.00

www.intech.co.nz/m11

NOTE
 For alkaline conditions between pH 7 ~ 13 use the -HT option.
 For conditions above pH 13 contact Intech.



Model 12 – General purpose ¾” NPT pH sensor for flowing, viscous applications.

Temperature: 0~80°C.
 Pressure: 0~100 psi.
 Cable length: 3 metres.
 Ref. cell: Double junction, KNO₃ and KCl/AgCl.
 High resistance to electrode poisoning solutions.
 The concave sensor configuration protects the pH bulb from particulate matter and provides a cleansing flow without affecting the line pressure characteristics.
 Ideal for pipelines with flow velocities greater than 30 cm/sec.
 Applications: Typical applications include batching and process control in the chemical, petro-chemical, pulp/paper and electroplating industries.

MODEL	DESCRIPTION	PRICE
M-12	Model 12 General purpose ¾” NPT pH sensor.	\$395.00
M-12-Pt100	Model 12-Pt100 General purpose ¾” NPT pH sensor. Includes a Pt100 sensor.	\$490.00
M-12-Pt100-HT	Model 12-Pt100-HT General purpose ¾” NPT pH sensor. High temp. version including a Pt100 sensor. High temperature: 0~110°C. High pressure: 0~150 psi. Do not use where ethers, ketones and most aromatic hydrocarbons are present. If these solvents are present use the standard version regardless of the temperature.	\$575.00

www.intech.co.nz/m12

<< Please refer to page 36 for our pH-HR data logger - ideal for use with these pH probes!
 (We recommend the probes that include the -Pt100 option for the best possible accuracy with the LPI-pH & pH-HR).

pH sensors

Model 21 – General purpose 3/4" NPT pH sensor with long insertion length.

Temperature: 0~80°C.
 Pressure: 0~100 psi.
 Cable length: 3 metres.
 Ref. cell: Double junction, KNO₃ and KCl/AgCl.
 High resistance to electrode poisoning solutions, typically those with cyanide, ammonia, sulphide and heavy metals in appreciable concentrations.

Applications: A combination pH sensor for insertion in tanks and large diameter pipes using process and waste water.

MODEL	DESCRIPTION	PRICE
M-21	Model 21 General purpose 3/4" NPT pH sensor with long insertion length.	\$405.00
M-21-Pt100	Model 21-Pt100 General purpose 3/4" NPT pH sensor with long insertion length. Includes a Pt100 sensor.	\$545.00
M-21-Pt100-HT	Model 21-Pt100-HT General purpose 3/4" NPT pH sensor with long insertion length. High temperature version including a Pt100 sensor. High temperature: 0~110°C. High pressure: 0~150 psi. Do not use where ethers, ketones and most aromatic hydrocarbons are present. If these solvents are present use the standard version regardless of the temperature.	\$585.00
Options		Add Price
Z7450	Cleaning Cage Kit.	\$270.00
	Note: Sensors must be ordered with the SCO option.	\$70.00



www.intech.co.nz/m21

NOTE

For alkaline conditions between pH 7 ~ 13 use the -HT option.
 For conditions above pH 13 contact Intech.

<< Please refer to page 36 for our pH-HR data logger - ideal for use with these pH probes!
 (We recommend the probes that include the -Pt100 option for the best possible accuracy with the LPI-pH & pH-HR).

pH transmitter



- ◆ 4~20mA loop powered.
- ◆ LCD display.
- ◆ 2 kV isolation.
- ◆ 0.1% accuracy.
- ◆ 40~200mV output test signal.
- ◆ LED indication of loop current.
- ◆ IP67 enclosure.

MODEL	DESCRIPTION	PRICE
LPI-pH	pH voltage to DC isolating transmitter with LCD display. pH milli volt input and Pt100 temperature compensation. Slope and offset adjustments for on-site calibration.	\$670.00

pH

www.intech.co.nz/lpi-ph

	0	ACID H+				NEUTRAL 7				ALKALINE OH-				14	
pH	0	1	2	3	4	5	6	7	8	9	10	11	12	13	14
mV at 25°C	+413							0							-413

Digital pH meter



www.intech.co.nz/202710

Jumo pH meter

MODEL	DESCRIPTION	PRICE
202710/20	<p>Hand held digital pH, ORP & temperature meter. <i>Manual and Automatic temperature compensation.</i></p> <ul style="list-style-type: none"> ◆ 0 to 14pH Range @ +/- 0.01 Accuracy. ◆ Min & Max Memory & 'HOLD' Function. ◆ Adjustable Auto Switch Off. ◆ Clear 2-line LC Display. ◆ Battery Condition Display. ◆ IP65 (Front Panel). ◆ Input: pH probe, BNC connection. <p>JUMO Datasheet: 20.2710</p>	\$798.00
Insertion	<p>pH probe. <i>Insertion electrode with silicone handle.</i> Insertion tip 6mm diameter. Two ceramic diaphragms. KCI reference electrolyte (free from Ag ions). 1m attached cable and BNC plug.</p> <p>Applications Food industry for insertion measurement in meat, fruit, sausage, cheese, dough and other semi-solid foodstuffs. Measurement in soils. Measurement in small liquid samples.</p>	\$415.00
Glass	<p>pH probe. <i>Glass combination electrode with silicone handle.</i> Spherical membrane. Ceramic diaphragm. KCI reference electrolyte (free from Ag ions). 1m attached cable and BNC plug.</p> <p>Applications General aqueous media, drinks industry, electroplating, factory laboratory, fish farming, aquarium, chemicals, waste water plants, pharmaceuticals, drinking water.</p>	\$330.00
Plastic	<p>pH probe. <i>Plastic shaft electrode with silicone handle.</i> Spherical membrane with protection basket. Glass fibre diaphragm. KCI reference electrolyte (free from Ag ions). 1m attached cable and BNC plug.</p> <p>Applications Unbreakable plastic shaft with protection basket for heavy duty applications. General aqueous media, drinks industry, electroplating, factory laboratory, fish farming, aquarium, chemicals, waste water plants.</p>	\$330.00



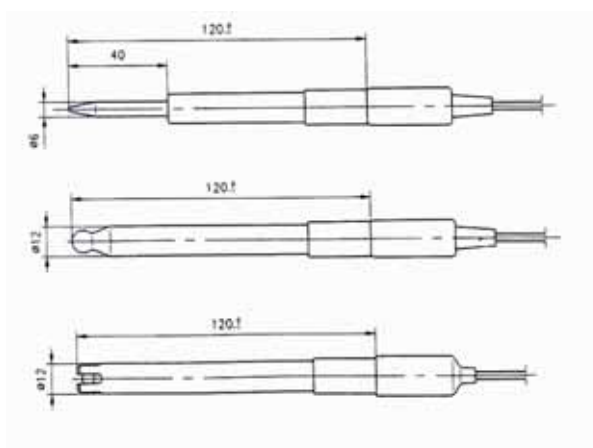
Insertion



Glass combination



Plastic shaft



JUMO Aquis 500 pH Transmitter / Controller

NEW pH Transmitter / Controller



JUMO

Features:

- ◆ Graphics display with background lighting.
- ◆ Simple menu guided 3 point calibration.
- ◆ Full PID controller functionality.
- ◆ 2 analogue (4~20mA / 0~10V) outputs.
- ◆ 2 changeover 3A, 250Vac relay outputs.
- ◆ Wall (IP67) and / or surface (IP65) mount (same unit).
- ◆ Power: 12~24 Vdc +/-15% or 110~230 Vac +/-10%.
- ◆ JUMO Datasheet: 20.2560

www.intech.co.nz/aquis500ph



MODEL	DESCRIPTION	PRICE
Aquis 500 pH	Panel / Wall Mount Instrument: 161 x 149 x 77mm. ◆ Output 1 - Process Value or PID Control 4~20mA. ◆ Output 2 - Changeover Relay for limit or PID control.	\$1692.00
Options	◆ Output 3 - 2nd process Value or PID Control (4~20mA). ◆ Output 4 - 2nd Changeover relay for limit or PID control.	\$315.00 \$178.00

JUMO tecLine electrodes are high-quality combination sensors for professional applications in process and industrial measurement technology. A temperature probe can also be integrated as an option, depending on the type.

Suitable versions are available to meet a wide variety of requirements:

- for industrial and communal water and wastewater engineering
- for measurements in suspensions and varnishes

Other versions available (see data sheet / web link)

www.intech.co.nz/tecline

- ◆ JUMO Datasheet: 20.1020

JUMO tecLine sensors are state-of-the-art for modern pH and redox electrodes. Each electrode is a quality product and is individually tested as a matter of routine. All standard electrodes are made from FDA-listed materials.

MODEL	DESCRIPTION	PRICE
Tecline	<i>For standard applications.</i> Glass shaft, gel-sealed, zirconium dioxide diaphragm, screw cap, 120mm, salt reserve. (JUMO sales article 20/00300151).	\$408.00
Tecline COAX	5m coaxial cable for Tecline pH probe. (JUMO sales article 20/00082673).	\$130.00
Tecline w/w	<i>For wastewater, heavily polluted media, suspensions & varnishes.</i> Glass shaft, gel-sealed, PTFE diaphragm, Pg 13.5 SMEK screw cap, 120mm, salt reserve, integrated Pt 100. (JUMO sales article 20/00470246).	\$552.00
Tecline w/w COAX	5m coaxial SMEK universal cable for Tecline w/w pH probe. (JUMO sales article 20/00347843).	\$380.00



Tecline

Tecline w/w

pH Probe Holders Immersion Fittings

www.intech.co.nz/phif

Immersion fittings are used for holding electrochemical sensors.

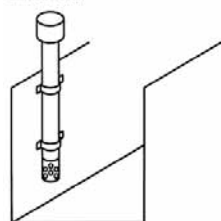
The fittings are mounted in open sluices or containers. They protect the installed sensor from breaking and enable measurement in different immersion depths.

JUMO Datasheet: 20.2820

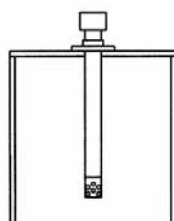
MODEL	DESCRIPTION	PRICES from
PHIF-40	Polypropylene (FPM seals), 500~2000mm lengths.	\$320.00 to \$540.00
PHIF-63	Polypropylene (FPM seals), 500~2000mm lengths. For 1~3 sensors.	\$1125.00 to \$1620.00

Installation options

Standard

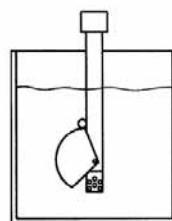


Fixing with pipe clips in the inlet channel

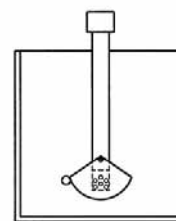


Fixing with a flange on a container

Use of a wetting cup



with the container filled



with empty container (residual liquid in the cup prevents the sensor from running dry)

