

Data logging and SCADA software (version 5).

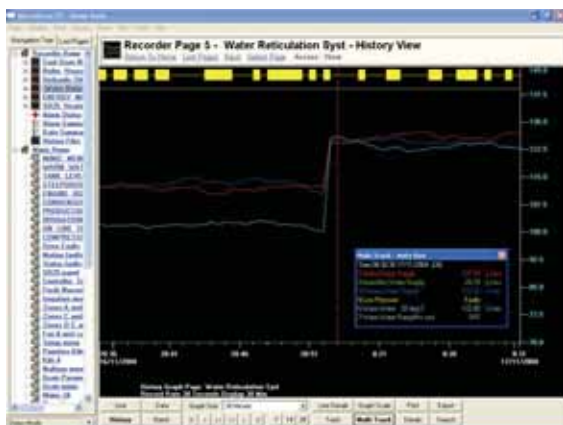


RECORDER MODULE

- ◆ Real-time line graphs.
- ◆ Real-time data screens.
- ◆ Data analysis.
- ◆ Batch recording.
- ◆ Continuous recording.
- ◆ Mathematical blocks e.g.
 - subtraction - addition
 - multiply - divide
 - Sq root - average
 - min/max - nat. log.
- ◆ Totalising in engineering units.
- ◆ Total hours run facility.
- ◆ Data logs to printer.
- ◆ ISO 9000 support.
- ◆ Data storage to disk.
- ◆ Help screens.
- ◆ Historical retrieval.
- ◆ Historical search.
- ◆ History replay.
- ◆ Function key support.
- ◆ Alarm handling and printing.
- ◆ Event handling and printing.
- ◆ Comment entry by operators.
- ◆ Report generator.
- ◆ User log-on and audit.
- ◆ DDE support.
- ◆ Communicates with:
 - Intech field stations.
 - Most PLC's.
- ◆ Multi-level passwords.
- ◆ Excel support.
- ◆ Cost effective field interface hardware.

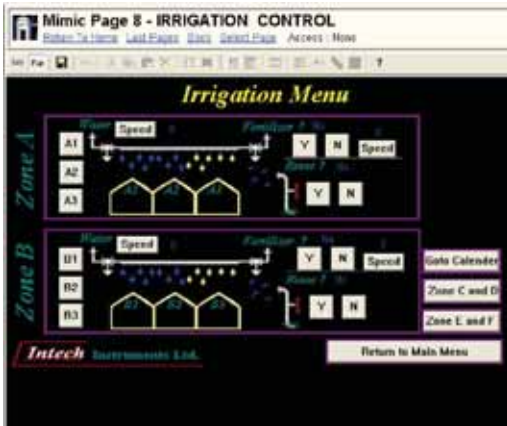
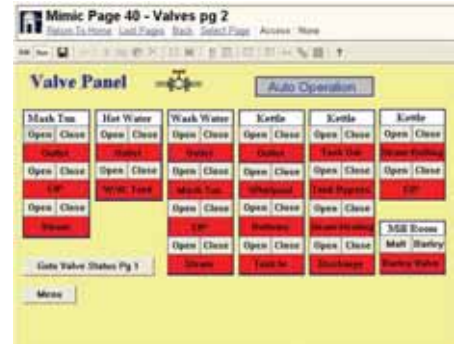
www.intech.co.nz/microscan

- ◆ MicroScan is a complete Windows based SCADA software product, meeting the demands of industrial, commercial, and research environments.
- ◆ Start off small with the world's best 'Recorder Module' for QA, mandatory data collections, plus plant wide monitoring, or jump straight into a full system with Recorder and Mimic (MM1) modules.
- ◆ Add the powerful 'Network Module' to share the data with managers, accountants, engineers, and others.



MIMIC MODULE

- ◆ Live screen graphics.
- ◆ PLC operator control.
- ◆ Current plant values and configuration.
- ◆ **Intech Micro** remote station support.
- ◆ Alarm handling and printing.
- ◆ Alarm logs.
- ◆ Controller support.
- ◆ DDE support.
- ◆ Network support.
- ◆ Up to 512 on/off software controllers each with:
 - Set point with differential adjustment.
 - Deviation high and low alarms.



CONTROLLER MODULE

- ◆ Up to 99 Shimaden controllers.
- ◆ Complete set up and monitoring of controllers and indicators.

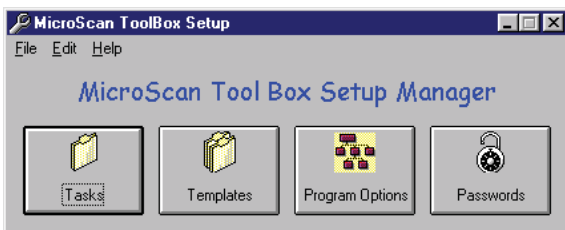
www.intech.co.nz/microscan

PLC INTERFACE MODULE

- ◆ Allows communication between PLC's and Recorder/Mimic modules.
- ◆ **Note:** Check with Intech engineers to ensure that the interface is available for the PLC to be used.



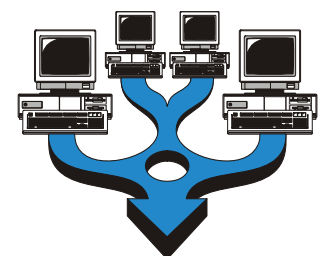
MICROSCAN TOOL BOX MODULE



- ◆ Data transfer.
- ◆ Mathematical formulas.
- ◆ Passwords.
- ◆ Audit tracking.
- ◆ Step controller.
- ◆ Time clock.
- ◆ Data average & min/max.
- ◆ Time functions.
- ◆ Data base.
- ◆ Time clocks.
- ◆ Other special functions:
 - e.g. relative humidity.
 - cylindrical tank volume.
 - list – look-up table.
 - rate of change.

NETWORK MODULE

- ◆ The ability to store files on a file server computer instead of the local computer to which the field hardware is connected.
- ◆ More than one computer can store files on the file server, these files can be picked up by any computer on the network with MicroScan installed.
- ◆ Price for the network module does not include the Network itself.
- ◆ Data file duplication for security.
- ◆ The Network should be installed and successfully running Windows before installing the MicroScan package.



Data logging and SCADA software (version 5). SOFTWARE MODULES

FOR FURTHER INFORMATION
REFER TO THE PREVIOUS TWO PAGES.

MicroScan Software "Recorder Packages". Comes complete with USB dongle.

www.intech.co.nz/microscan

MODEL	DESCRIPTION	PRICE
R16	MicroScan recorder. 16 inputs, 16 outputs.	\$1630.00
R32	MicroScan recorder. 32 inputs, 32 outputs.	\$1810.00
R50	MicroScan recorder. 50 inputs, 160 outputs.	\$1910.00
R100	MicroScan recorder. 100 inputs, 160 outputs.	\$2440.00
R200	MicroScan recorder. 200 inputs, 160 outputs.	\$3300.00
R300	MicroScan recorder. 300 inputs, 160 outputs.	\$3850.00
R400	MicroScan recorder. 400 inputs, 160 outputs.	\$4400.00
R600	MicroScan recorder. 600 inputs, 160 outputs.	\$5390.00
R800	MicroScan recorder. 800 inputs, 160 outputs.	\$6330.00
R1000	MicroScan recorder. 1000 inputs*, 160 outputs.	\$7150.00



* Maximum recorder lines = 1000 made up of 100 pages with 10 lines on each page.

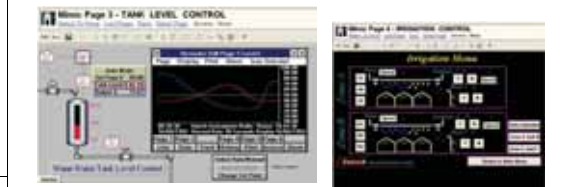
**MicroScan Software "Tag Packages". Comes complete with USB dongle.
Includes: Recorder, Mimics, Shimaden and DDE.**

www.intech.co.nz/microscan

MODEL	DESCRIPTION	PRICE
T50	MicroScan software package. 50 tags.	\$2310.00
T75	MicroScan software package. 75 tags.	\$2730.00
T150	MicroScan software package. 150 tags.	\$3960.00
T300	MicroScan software package. 300 tags.	\$5170.00
T500	MicroScan software package. 500 tags.	\$6380.00
T750	MicroScan software package. 750 tags.	\$7590.00
T5000	MicroScan software package. 5000 tags.*	\$8800.00
Note 1	Mimics (Only available with Tag option): No. of pages: 100 max. I/O per page: 380 max. Controllers: 500 on/off software controllers, Each with individual: Set point, Differential adjustment, Deviation alarms.	
SYM	Symbol Factory Library for Mimics images. www.intech.co.nz/sym	POA

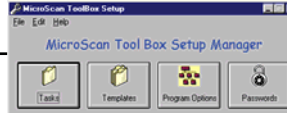






* Maximum Tags = 5000 (max I/O = 5000).



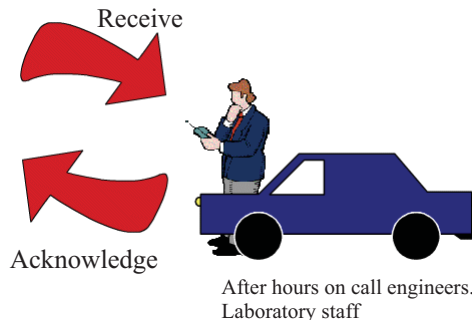
Optional Software Modules. (Not for Recorder LITE 8, LITE 16 or LITE 32 Packages)

TB+	MicroScan Tool Box. www.intech.co.nz/toolbox Data transfer, mathematical formulas, time clocks, step controller, recipes, data base and remote editor.	\$500.00
PLC	PLC Interface - specify PLC make and model.	\$600.00
P1	Network Drivers: Active PC will support 1 Passive PC.	\$950.00
P2	Active PC will support 2 Passive PC's.	\$1450.00
P3	Active PC will support 3 Passive PC's.	\$1950.00
P4	Active PC will support 4 Passive PC's.	\$2450.00
P5	Active PC will support 5 Passive PC's.	\$2920.00
P6+	Active PC will support 6 or more passive nodes.	\$3300.00
Version Upgrades (Example from V4 to V5). Price = 35% of the equivalent V5 list price including all modules. Plus New dongle or License as per below.		
Moving to a larger package and/or modules combination. Price is the dollar difference between packages plus \$220 plus a new Dongle or License Key as per below. Also if increasing modules.		
USB Dongle. (Parallel dongle available on special request). Includes license key. Notes: Old Sentinel-C dongles are now redundant and must be returned to Intech. Software Locking is NOT available!		\$350.00
New MicroScan License Key. Charge for issuing new license key (License only, no dongle).		\$98.00

MicroScan MA5 Mobile Alarm and Text Messaging

Text Messages Allow You To Keep In Touch With Your Process

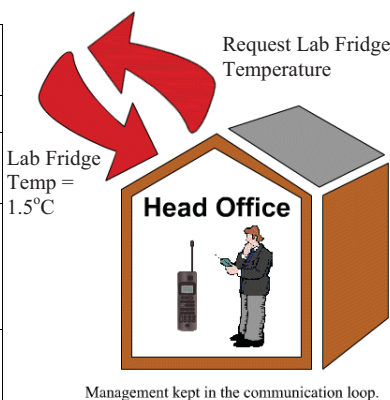


www.intech.co.nz/ma5

- ◆ Alarms immediately sent as text message to mobile phone and/or emailed.
- ◆ Alarms can be sent sequentially until acknowledged.
- ◆ Alarm message acknowledgment from mobile phone by returning alarm text message.
- ◆ Request any plant parameter by sending a text message from mobile phone.
- ◆ Commissioning / Critical parameters can be configured to be regularly sent as txt msg &/or email.
- ◆ Plant control settings can be adjusted from mobile phone via plant Mimics.
- ◆ A log file is kept of all communications and is stored on the PC for audit tracking.
- ◆ Daily email reports of activity.
- ◆ Send data automatically between two MicroScan V5 sites.
- ◆ One Siemens MC35 GSM Modem can connect to multiple MA5 clients across the network.

MicroScan MA5 (Mobile Alarming 5) software.
Runs with MicroScan Version 5 software & Microsoft .NET 2.0

MODEL	DESCRIPTION	PRICE
MA5	For MicroScan V5 software packages.	\$882.00
MA5-Lite	For MicroScan V5 LITE 8, LITE 16, LITE 32, R16 and R32 packages only. Includes all features of MA5.	\$486.00
MA5 MC35 Kit*	Gsm message hardware kit add: * Does not include SIM card.	\$990.00



Features

- ◆ Receive Alarms.
- ◆ Acknowledge Alarms.
- ◆ Check Alarms Acknowledged.
- ◆ Change Alarm setpoints, Delay, Enable/Disable.
- ◆ Monitor Critical Parameters.
- ◆ Request Plant Parameters.
- ◆ Change Plant Parameters.
- ◆ Activate Plant Equipment.

MicroScan Training and Support

MicroScan After Sale Support — OPTIONS:	Price
Precommission and Onsite Commissioning. Plus travel and accommodation where applicable.	\$118.00 (per hour)
Phone and Modem Support. Charged in 10 minute blocks at \$23.00 per block plus toll charges.	\$23.00 (per block)
Training in Christchurch by arrangement.	POA

