

## Pressure transmitters



- ◆ 4~20mA loop powered.
- ◆ Temperature compensation.
- ◆ IP67 enclosure.

[www.intech.co.nz/lpn-dp](http://www.intech.co.nz/lpn-dp)

| MODEL          | DESCRIPTION   | PRICE    |                 |
|----------------|---|----------|-----------------|
| LPN-DP-100mm   | <b>Differential pressure transmitter.</b><br>Differential range within $\pm 20$ to $\pm 125$ mm WG.   | \$872.00 | <b>100mm</b>    |
| LPN-DP-250mm   | <b>Differential pressure transmitter.</b><br>Differential range within $\pm 100$ to $\pm 250$ mm WG.  | \$872.00 | <b>250mm</b>    |
| LPN-DP-1000mm  | <b>Differential pressure transmitter.</b><br>Differential range within $\pm 250$ to $\pm 1000$ mm WG.                                       | \$850.00 | <b>1000mm</b>   |
| LPN-DP-100kPa  | <b>Differential pressure transmitter.</b><br>Differential range within $\pm 40$ to $\pm 100$ kPa.   | \$780.00 | <b>100kPa</b>   |
| LPN-DP-3/15psi | <b>Pressure transmitter.</b><br>Range: 3~15 PSI.<br>Can be used with I/P transducers (3~15 PSI output models) for monitoring - see page 97. | \$780.00 | <b>3/15 psi</b> |
| LPN-DP-Bar     | <b>Absolute pressure transmitter (atmospheric).</b><br>Range: 900 to 1100 mbar absolute.  | \$850.00 | <b>Bar</b>      |

## pH transmitter



- ◆ 4~20mA loop powered.
- ◆ LCD display.
- ◆ 2 kV isolation.
- ◆ 0.1% accuracy.
- ◆ 40~200mV output test signal.
- ◆ LED indication of loop current.
- ◆ IP67 enclosure.

For pH probes available for use with the LPI-pH, refer to pages 54~57 >>

| MODEL  | DESCRIPTION   | PRICE    |
|--------|---|----------|
| LPI-pH | <b>pH voltage to DC isolating transmitter with LCD display.</b><br>pH milli volt input and Pt100 temperature compensation.<br>Slope and offset adjustments for on-site calibration. | \$670.00 |

[www.intech.co.nz/lpi-ph](http://www.intech.co.nz/lpi-ph)

|            | 0    | ACID<br>H+ |   |   |   |   | NEUTRAL<br>7 |   |   |   |    | ALKALINE<br>OH- |    |    |      |  | 14 |
|------------|------|------------|---|---|---|---|--------------|---|---|---|----|-----------------|----|----|------|--|----|
| pH         | 0    | 1          | 2 | 3 | 4 | 5 | 6            | 7 | 8 | 9 | 10 | 11              | 12 | 13 | 14   |  |    |
| mV at 25°C | +413 |            |   |   |   |   |              | 0 |   |   |    |                 |    |    | -413 |  |    |

## pH sensors

**Model 21 – General purpose 3/4" NPT pH sensor with long insertion length.**

Temperature: 0~80°C.  
 Pressure: 0~100 psi.  
 Cable length: 3 metres.  
 Ref. cell: Double junction, KNO<sub>3</sub> and KCl/AgCl.  
 High resistance to electrode poisoning solutions, typically those with cyanide, ammonia, sulphide and heavy metals in appreciable concentrations.

Applications: A combination pH sensor for insertion in tanks and large diameter pipes using process and waste water.

| MODEL                | DESCRIPTION  | PRICE            |
|----------------------|--|------------------|
| <b>M-21</b>          | <b>Model 21</b><br>General purpose 3/4" NPT pH sensor with long insertion length.  | \$405.00         |
| <b>M-21-Pt100</b>    | <b>Model 21-Pt100</b><br>General purpose 3/4" NPT pH sensor with long insertion length. Includes a Pt100 sensor.   | \$545.00         |
| <b>M-21-Pt100-HT</b> | <b>Model 21-Pt100-HT</b><br>General purpose 3/4" NPT pH sensor with long insertion length. High temperature version including a Pt100 sensor.<br>High temperature: 0~110°C.<br>High pressure: 0~150 psi.<br>Do not use where ethers, ketones and most aromatic hydrocarbons are present. If these solvents are present use the standard version regardless of the temperature. | \$585.00         |
| <b>Options</b>       |  | <b>Add Price</b> |
| <b>Z7450</b>         | <b>Cleaning Cage Kit.</b>  | \$270.00         |
|                      | Note: Sensors must be ordered with the SCO option.   | \$70.00          |



[www.intech.co.nz/m21](http://www.intech.co.nz/m21)

**NOTE**

For alkaline conditions between pH 7 ~ 13 use the -HT option.  
 For conditions above pH 13 contact Intech.

<< Please refer to page 36 for our pH-HR data logger - ideal for use with these pH probes!  
 (We recommend the probes that include the -Pt100 option for the best possible accuracy with the LPI-pH & pH-HR).

## pH transmitter



- ◆ 4~20mA loop powered.
- ◆ LCD display.
- ◆ 2 kV isolation.
- ◆ 0.1% accuracy.
- ◆ 40~200mV output test signal.
- ◆ LED indication of loop current.
- ◆ IP67 enclosure.

| MODEL         | DESCRIPTION   | PRICE    |
|---------------|---|----------|
| <b>LPI-pH</b> | <b>pH voltage to DC isolating transmitter with LCD display.</b><br>pH milli volt input and Pt100 temperature compensation.<br>Slope and offset adjustments for on-site calibration. | \$670.00 |

pH

[www.intech.co.nz/lpi-ph](http://www.intech.co.nz/lpi-ph)

|            | 0    | ACID<br>H+ |   |   |   |   | NEUTRAL<br>7 |   |   |   |    | ALKALINE<br>OH- |    |    |      |  | 14 |
|------------|------|------------|---|---|---|---|--------------|---|---|---|----|-----------------|----|----|------|--|----|
| pH         | 0    | 1          | 2 | 3 | 4 | 5 | 6            | 7 | 8 | 9 | 10 | 11              | 12 | 13 | 14   |  |    |
| mV at 25°C | +413 |            |   |   |   |   |              | 0 |   |   |    |                 |    |    | -413 |  |    |

# JUMO Aquis 500 pH Transmitter / Controller

**NEW** pH Transmitter / Controller



JUMO

### Features:

- ◆ Graphics display with background lighting.
- ◆ Simple menu guided 3 point calibration.
- ◆ Full PID controller functionality.
- ◆ 2 analogue (4~20mA / 0~10V) outputs.
- ◆ 2 changeover 3A, 250Vac relay outputs.
- ◆ Wall (IP67) and / or surface (IP65) mount (same unit).
- ◆ Power: 12~24 Vdc +/-15% or 110~230 Vac +/-10%.
- ◆ JUMO Datasheet: 20.2560

[www.intech.co.nz/aquis500ph](http://www.intech.co.nz/aquis500ph)



| MODEL               | DESCRIPTION  | PRICE                |
|---------------------|--|----------------------|
| <b>Aquis 500 pH</b> | Panel / Wall Mount Instrument: 161 x 149 x 77mm.<br>◆ Output 1 - Process Value or PID Control 4~20mA.<br>◆ Output 2 - Changeover Relay for limit or PID control. | \$1692.00            |
| <b>Options</b>      | ◆ Output 3 - 2nd process Value or PID Control (4~20mA).<br>◆ Output 4 - 2nd Changeover relay for limit or PID control.   | \$315.00<br>\$178.00 |

JUMO tecLine electrodes are high-quality combination sensors for professional applications in process and industrial measurement technology. A temperature probe can also be integrated as an option, depending on the type.

Suitable versions are available to meet a wide variety of requirements:

- for industrial and communal water and wastewater engineering
- for measurements in suspensions and varnishes

### Other versions available (see data sheet / web link)

[www.intech.co.nz/tecline](http://www.intech.co.nz/tecline)

- ◆ JUMO Datasheet: 20.1020

JUMO tecLine sensors are state-of-the-art for modern pH and redox electrodes. Each electrode is a quality product and is individually tested as a matter of routine. All standard electrodes are made from FDA-listed materials.

| MODEL                   | DESCRIPTION   | PRICE    |
|-------------------------|---|----------|
| <b>Tecline</b>          | <i>For standard applications.</i><br>Glass shaft, gel-sealed, zirconium dioxide diaphragm, screw cap, 120mm, salt reserve. (JUMO sales article 20/00300151).  | \$408.00 |
| <b>Tecline COAX</b>     | 5m coaxial cable for Tecline pH probe. (JUMO sales article 20/00082673).  | \$130.00 |
| <b>Tecline w/w</b>      | <i>For wastewater, heavily polluted media, suspensions &amp; varnishes.</i><br>Glass shaft, gel-sealed, PTFE diaphragm, Pg 13.5 SMEK screw cap, 120mm, salt reserve, integrated Pt 100. (JUMO sales article 20/00470246). | \$552.00 |
| <b>Tecline w/w COAX</b> | 5m coaxial SMEK universal cable for Tecline w/w pH probe. (JUMO sales article 20/00347843).   | \$380.00 |



Tecline

Tecline w/w

### pH Probe Holders Immersion Fittings

[www.intech.co.nz/phif](http://www.intech.co.nz/phif)

Immersion fittings are used for holding electrochemical sensors.

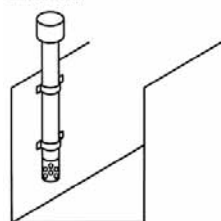
The fittings are mounted in open sluices or containers. They protect the installed sensor from breaking and enable measurement in different immersion depths.

JUMO Datasheet: 20.2820

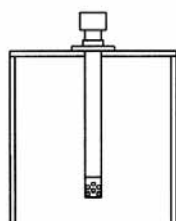
| MODEL          | DESCRIPTION   | PRICES from            |
|----------------|---|------------------------|
| <b>PHIF-40</b> | Polypropylene (FPM seals), 500~2000mm lengths.                  | \$320.00 to \$540.00   |
| <b>PHIF-63</b> | Polypropylene (FPM seals), 500~2000mm lengths. For 1~3 sensors. | \$1125.00 to \$1620.00 |

### Installation options

Standard

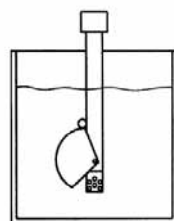


Fixing with pipe clips in the inlet channel

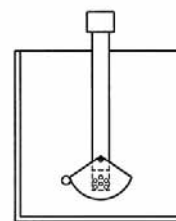


Fixing with a flange on a container

Use of a wetting cup



with the container filled



with empty container (residual liquid in the cup prevents the sensor from running dry)

